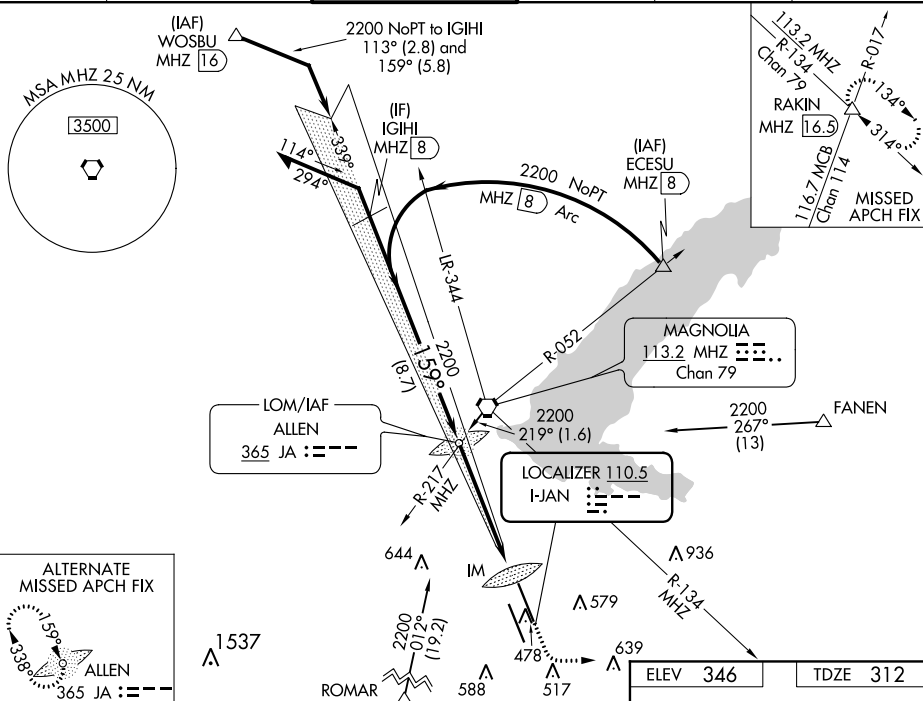
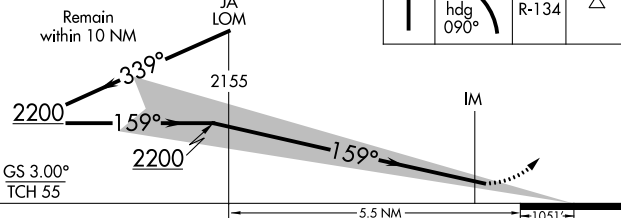


ILS RWY 16L (CAT II & III)
JACKSON-MEDGAR WILEY EVERS INTL (JAN)

MISSED APPROACH: Climb to 800 then climbing left turn to 3000 on heading 090° and MHZ VORTAC R-134 to RAKIN INT/MHZ 16.5 DME and hold.

UNICOM
122.95

800 ↑	3000 hdg 090°	MHZ R-134	RAKIN △
----------	---------------------	--------------	------------



CATEGORY	A	B	C	D
S-ILS 16L	CAT II RA 119/12 100 DA 412			
S-ILS 16L	CAT IIIA RVR 07			
S-ILS 16L	CAT IIIB RVR 06			
S-ILS 16L	CAT IIIC NA			

CATEGORY II & III ILS - SPECIAL AIRCREW
& AIRCRAFT CERTIFICATION REQUIRED

