

WAAS CH <b>65629</b> <b>W15A</b>	APP CRS <b>152°</b>	Rwy Idg TDZE <b>12</b> Apt Elev <b>15</b>
--	------------------------	---

**RNAV (GPS) RWY 15**  
LAKE CHARLES RGNL (LCH)

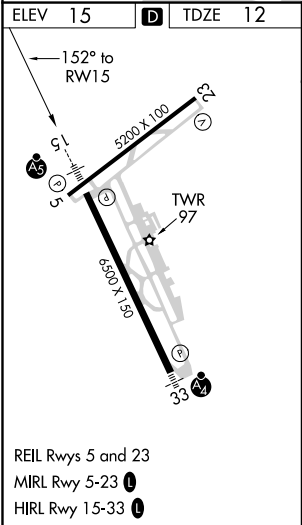
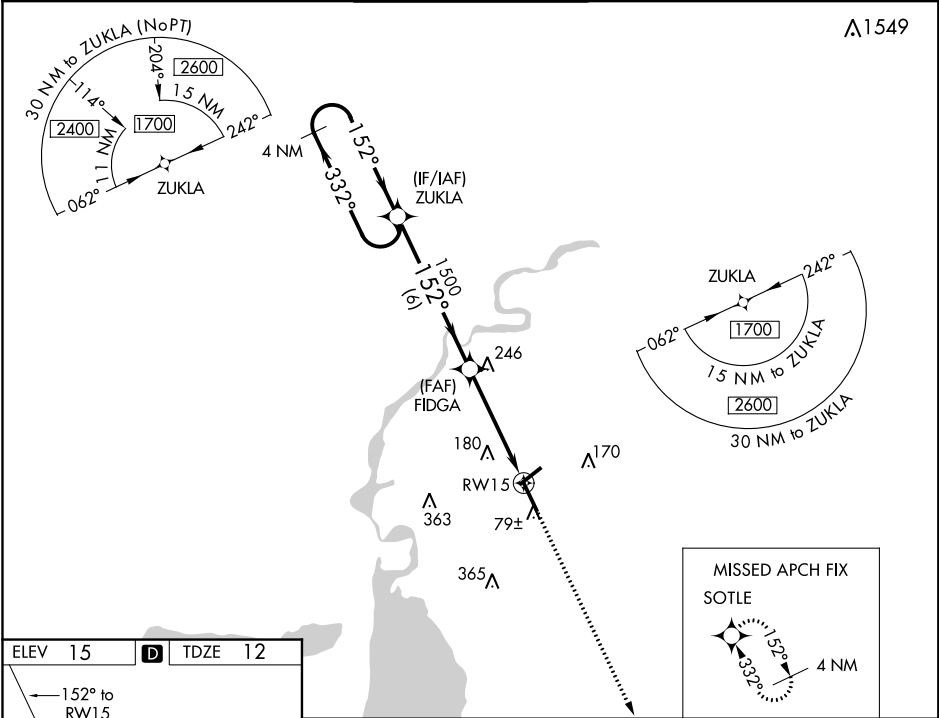
RNP APCH.

**⚠** For uncompensated Baro-VNAV systems, LNAV/VNAV below -3°C (27°F) or above 43°C (109°F). For inop MALSR, increase LNAV-VNAV all Cats visibility to ½ and LNAV Cats C and D to 1½ mile. \*\* RVR 1800 authorized with use of FD or AP or HUD to DA.



**MISSED APPROACH:**  
Climb to 1900 direct  
SOTLE and hold.

ATIS <b>118.75</b>	LAKE CHARLES APP CON ★ <b>119.35 353.75</b>	LAKE CHARLES TOWER ★ <b>120.7 (CTAF) 0 257.8</b>	GND CON <b>121.8</b>	CLNC DEL <b>126.25</b>	UNICOM <b>122.95</b>
-----------------------	--	---	-------------------------	---------------------------	-------------------------



4 NM Holding Pattern		VGSI and RNAV glidepath not coincident (VGSI Angle 3.00/TCH 70).		1900	SOTLE
1700		ZUKLA		FIDGA	
GP 3.00° TCH 55		1500		1500	
		6 NM		3.2 NM	1.3
CATEGORY	A	B	C	D	
LPV DA	212/24		200 (200-½)		
LNAV/VNAV DA	301/24		289 (300-½)		
LNAV MDA	500/24		500/50		488 (500-1)
<b>C</b> CIRCLING	500-1		580-1½		680-2¼
				565 (600-1½)	665 (700-2¼)

SC-4, 31 DEC 2020 to 28 JAN 2021

SC-4, 31 DEC 2020 to 28 JAN 2021