

RNAV (GPS) RWY 1L

APCH CRS 011°	Rwy Idg TDZE Arpt Elev	8003 254 316
------------------	------------------------------	--------------------

AL-5079 (USN)

MERIDIAN NAS (MC CAIN FLD) (KNMM)

T * When ALS inop, increase CAT AB vis to 1 mile, CAT CDE to 1 3/8 miles.

ALSF-1

MISSED APPROACH: Climb to 2100 direct JARAX and hold.

ATIS★	APP CON
290.525	119.2 348.7 E
	379.275 N
	120.5 269.325 S
	120.95 276.4 W

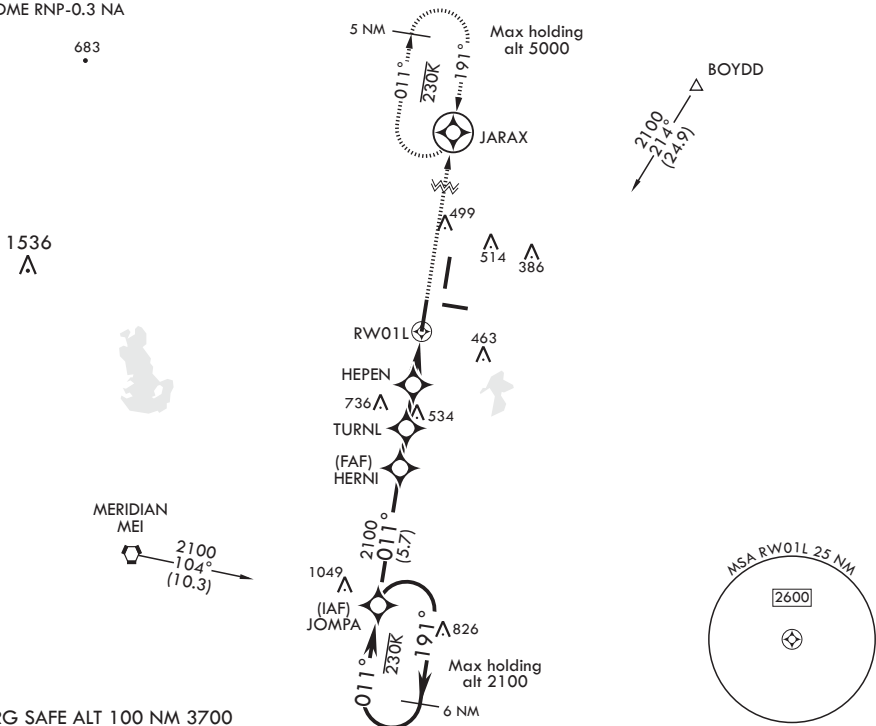
MC CAIN TOWER ★
126.2 340.2 RWY 01L, 19L AND 28
126.2 360.2 RWY 01R, 19R AND 10

MC CAIN GND CON
336.4

CLNC DE
301.0

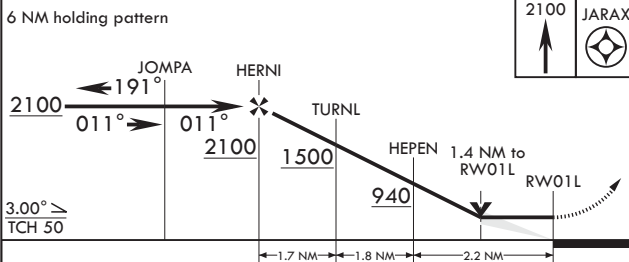
ASR/PAR

DME/DME RNP-0.3 NA

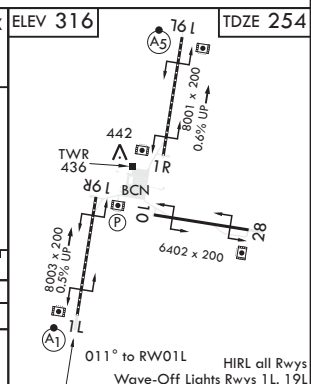


EMERG SAFE ALT 100 NM 3700

6 NM holding pattern



CATEGORY	A	B	C	D	E
LNAV MDA*	760-1/2	506 (500-1/2)	760-1	506	(500-1)
CIRCLING	840-1	524 (600-1)	840-1 1/2 524 (600-1/2)	880-2 564 (600-2)	1080-2 3/4 764 (800-2 3/4)



MERIDIAN, MISSISSIPPI

32°33'N - 88°33'W

MERIDIAN NAS (MC CAIN FLD) (KNMM)

Amdt 3 26MAR20

RNAV (GPS) RWY 1L