

ILS or LOC/DME RWY 19L

LOC I-NMM 109.7	APCH CRS 191°	Rwy Idg 8001
		TDZE 316
		Arpt Elev 316

AL-5079 [USN]

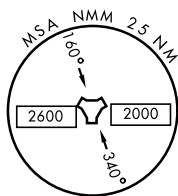
MERIDIAN NAS (MC CAIN FIELD) (KNMM)

- ▼ * When ALS inop, increase all CAT vis to $\frac{3}{4}$ mile.
 ** When ALS inop, increase CAT AB vis to 1 mile,
 CAT CD vis to $1\frac{1}{8}$ miles.



MISSED APPROACH: Climb to 800, then climbing left turn to 2100 to intercept NMM R-141 to UBERY and hold.

ATIS ★ 290.525	MERIDIAN APP CON 120.95 276.4	NAVY MC CAIN TOWER ★ 126.2 340.2	GND CON 336.4	CLNC DEL 301.0	ASR/PAR
--------------------------	---	--	-------------------------	--------------------------	---------



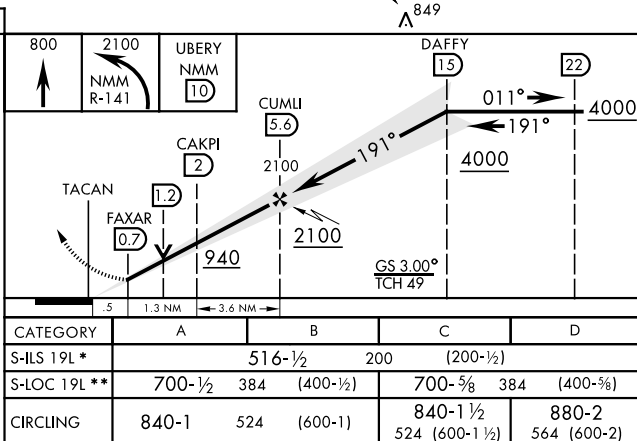
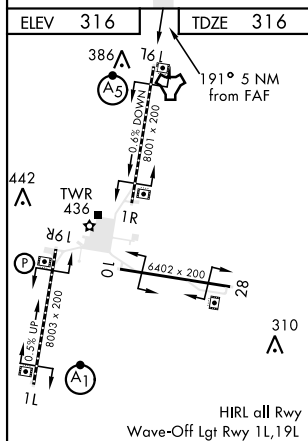
CAUTION: GS unusable beyond 3° right of localizer course and 7° left of localizer course.

1544

LOCALIZER 109.7
I-NMMMERIDIAN
Chan 56 NMM

RADAR REQUIRED

EMERG SAFE ALT 100 NM 3700



MERIDIAN, MISSISSIPPI

32°33'N-88°33'W

MERIDIAN NAS (MC CAIN FIELD) (KNMM)

Amdt 2 12SEP19

ILS or LOC/DME RWY 19L