


LOC I-HUM <b>108.5</b>	APP CRS <b>179°</b>	Rwy Idg TDZE Apt Elev <b>6508</b> <b>8</b> <b>9</b>	ILS or LOC RWY 18 HOUMA-TERREBONNE (HUM)	
---------------------------	------------------------	--	---	--

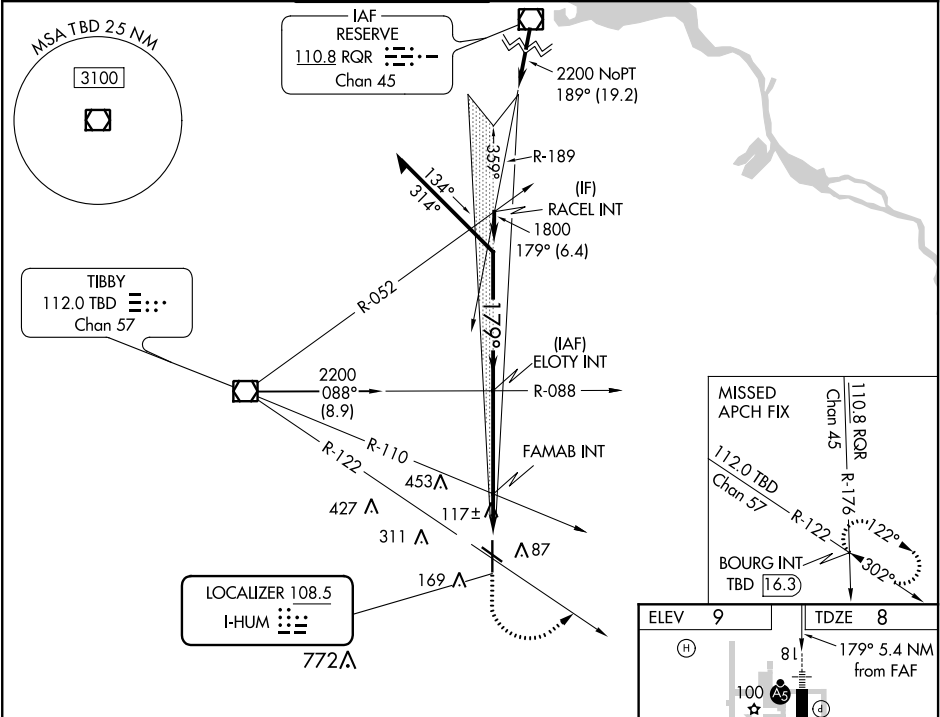
▼ When local altimeter setting not received, use Louis Armstrong New Orleans Intl altimeter setting: increase DA to 285 feet; increase all MDA 80 feet and S-LOC 18 Cat C/D visibility ¼ SM and Circling Cat C/D visibility ¼ SM. For inop ALS increase S-LOC 18 Cat C/D visibility to 1 SM. For inop ALS when using Louis Armstrong New Orleans Intl altimeter setting increase SHLS 18 all Cats visibility ⅞ SM.

MALSR



MISSED APPROACH: Climb to 1100 then climbing left turn to 1800 on heading 050° and TBD VOR/DME R-122 to BOURG INT/TBD 16.3 DME and hold.

ATIS <b>120.25</b>	NEW ORLEANS APP CON <b>118.9 350.35</b>	HOUMA TOWER ★ <b>125.3 (CTAF) 0 346.3</b>	GND CON <b>123.875</b>	CLNC DEL <b>118.9</b> (When twr closed)	UNICOM <b>122.95</b>
-----------------------	--	--	---------------------------	---	-------------------------



Remain within 10 NM		ELOTY INT	1100	1800	TBD	BOURG INT
GS 3.00° TCH 52		6000	↑	hdg 050°	R-122	
359°		179°	* LOC only.			
2200		1800	*600			
3.7 NM		1.7 NM				
CATEGORY	A	B	C	D		
S-ILS 18	208-½		200 (200-½)			
S-LOC 18	380-½	372 (400-½)	380-⅝	372 (400-⅝)		
CIRCLING	480-1	471 (500-1)	760-2¼ 751 (800-2¼)	760-2½ 751 (800-2½)		

HOUMA, LOUISIANA

Amdt 5 27APR17

29°34'N-90°40'W

HOUMA-TERREBONNE (HUM)

ILS or LOC RWY 18