

WAAS CH 61103 W27A	APP CRS 270°	Rwy Idg TDZE Apt Elev	5999 92 112
--	------------------------	-----------------------------	--

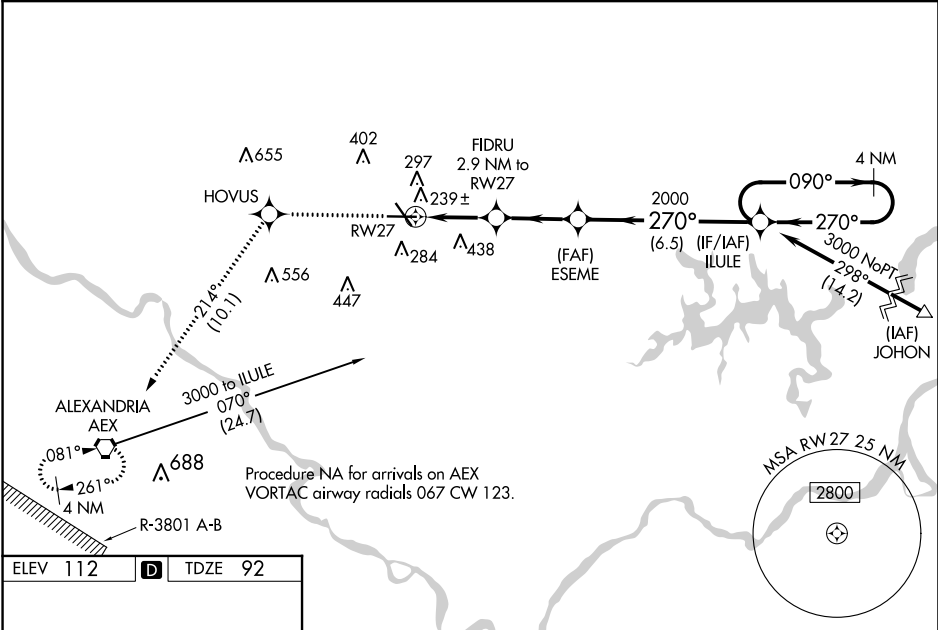
RNAV (GPS) RWY 27
ESLER RGNL (E/SF')

⚠ When VGSI inop, Circling Rwy 14-32 NA at night. Baro-VNAV and VDP NA when using Alexandria Intl altimeter setting. For uncompensated Baro-VNAV systems, LNAV/VNAV NA below -6°C (22°F) or above 54°C (130°F). DME/DME RNP-0.3 NA. When local altimeter setting not received, use Alexandria Intl altimeter setting and increase all DA 35 feet and all MDA 40 feet, increase LNAV/VNAV all Cats and LNAV Cat C/D visibility 1/8 mile. For inoperative MALSR increase LNAV/VNAV all Cats visibility to 1 mile and LNAV Cat C/D visibility to 1 1/8. For inoperative MALSR, when using Alexandria Intl altimeter setting, increase LNAV/VNAV all Cats visibility to 1 1/8 mile.

MALSR

MISSED APPROACH:
Climb to 3000 direct HOVUS and on track 214° to AEX VORTAC and hold.

ESF ASOS 119.425	POLK APP CON 125.4 254.8	UNICOM 122.8 (CTAF) 0
----------------------------	------------------------------------	---------------------------------



ELEV 112 **D** TDZE 92

REIL Rws 9, 14 and 32 **0**
MIRL Rwy 14-32 **0**
HIRL Rwy 9-27 **0**

3000	HOVUS	tr 214°	AEX	ILULE	4 NM Holding Pattern
*LNAV only.					
FIDRU 2.9 NM to RW27					
*1.1 NM to RW27					
*1060					
ESEME 2000					
ILULE 3000					
GP 3.00° TCH 59					
1.1 NM 1.8 NM 2.9 NM 6.5 NM					
CATEGORY	A	B	C	D	
LPV DA	292-1/2		200 (200-1/2)		
LNAV/VNAV DA	422-5/8		330 (400-3/8)		
LNAV MDA	500-1/2 408 (400-1/2)		500-3/4 408 (400-3/4)		
CIRCLING	600-1 488 (500-1)		600-1 1/2 488 (500-1 1/2)		740-2 628 (700-2)

SC-4, 31 DEC 2020 to 28 JAN 2021

SC-4, 31 DEC 2020 to 28 JAN 2021