

RNP APCH.

⚠

⚠

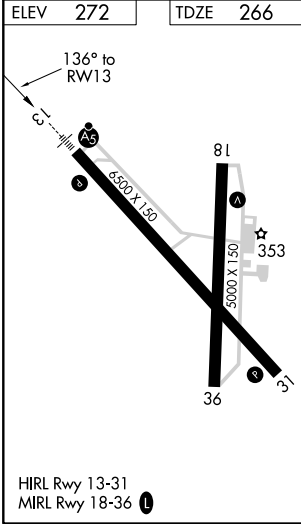
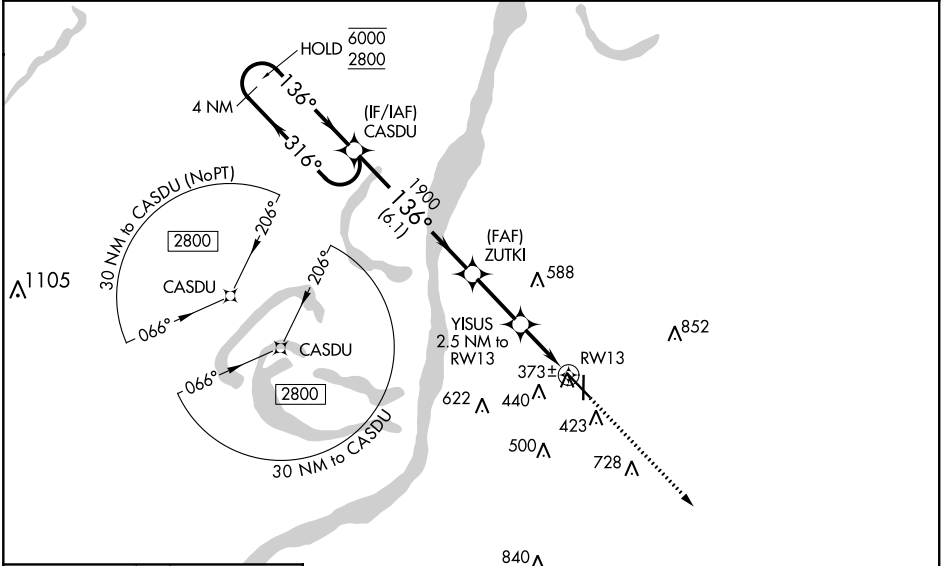
Circling to Rwy 36 NA at night. For uncompensated Baro-VNAV systems, LNAV/VNAV NA below -15° C or above 54° C. For inop ALS, increase LNAV/VNAV all Cats visibility to ¾ SM and LNAV Cat C and D visibility to 1½ SM.

MALSRL

AS

MISSED APPROACH: Climb to 2800 direct WEGRA and hold.

AWOS-3PT 124.675	HOUSTON CENTER 120.975 299.6	UNICOM 122.8 (CTAF)
---------------------	---------------------------------	------------------------



4 NM Holding Pattern

6000

2800

GP 3.00°
TCH 54

CASDU

ZUTKI

YISUS

2.5 NM to RW13

*1.1 NM to RW13

RW13

4 NM

2800

WEGRA

*LNAV only

CATEGORY	A	B	C	D
LPV DA	466-½	200 (200-½)		
LNAV/VNAV DA	534-½	268 (300-½)		
LNAV MDA	680-½ 414 (500-½)	680-¾ 414 (500-¾)		
CIRCLING	740-1 468 (500-1)	800-1 528 (600-1)	1020-2¼ 748 (800-2¼)	1220-3 948 (1000-3)