

LOC I-HEZ
111.35

APP CRS
136°

Rwy Idg
TDZE
Apt Elev
6500
266
272

ILS or LOC RWY 13

HARDY-ANDERS FIELD NATCHEZ-ADAMS COUNTY (HEZ)

ADF or DME required for procedure entry.

▼
NA

Circling to Rwy 36 NA at night.
For inop ALS, increase S-LOC 13 Cat C and D visibility to 1½ SM.

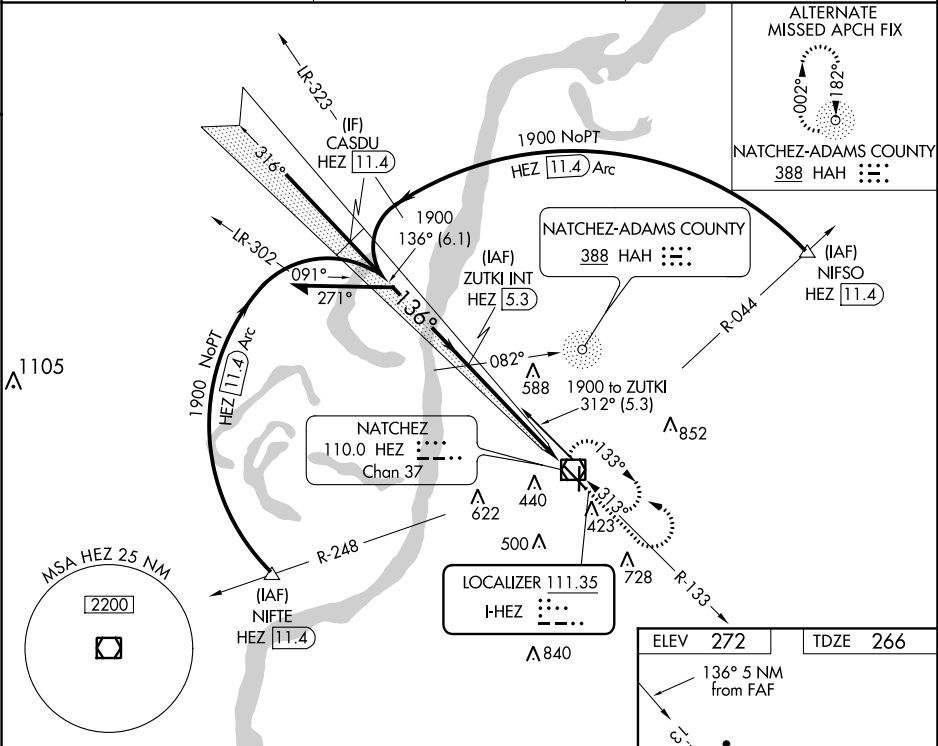
MALSR

MISSED APPROACH:
Climb to 2000 then left
turn direct HEZ VOR/DME
and hold.

AWOS-3PT
124.675

HOUSTON CENTER
120.975 299.6

UNICOM
122.8 (CTAF) 0



Remain within 10 NM

ZUTKI INT HEZ 5.3

2000

HEZ

316°

1900

CASDU HEZ 11.4

1900

136°

1900

GS 3.00° TCH 54

HEZ 0.4

6.1 NM

5 NM

CATEGORY	A	B	C	D
S-ILS 13		466-½	200 (200-½)	
S-LOC 13	760-½	494 (500-½)	760-1	494 (500-1)
CIRCLING	760-1 488 (500-1)	800-1 528 (600-1)	1020-2¼ 748 (800-2¼)	1220-3 948 (1000-3)

HIRL Rwy 13-31
MIRL Rwy 18-36 0

FAF to MAP 5 NM

Knots	60	90	120	150	180
Min:Sec	5:00	3:20	2:30	2:00	1:40