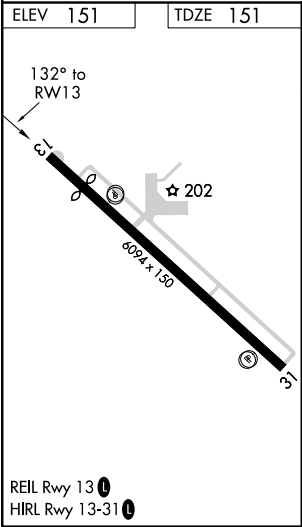
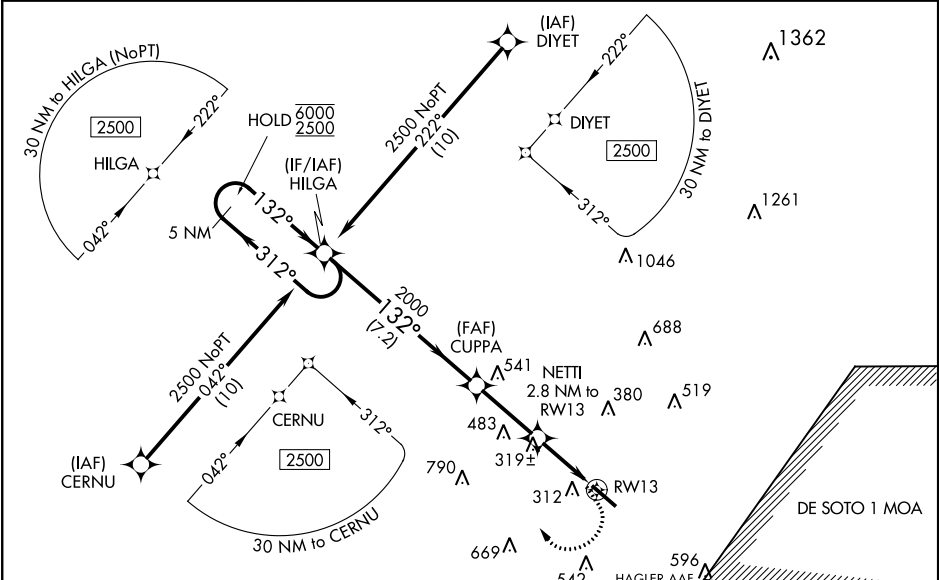


WAAS CH 86403 W13A	APP CRS 132°	Rwy Idg TDZE 151 Apt Elev 151	5098
--	------------------------	---	-------------

RNAV (GPS) Z RWY 13
HATTIESBURG BOBBY L CHAIN MUNI (HBG)

RNP APCH.	MISSED APPROACH: Climb to 600 then climbing right turn to 2500 direct HILGA and hold.
▼ For uncompensated Baro-VNAV systems, LNAV/VNAV NA below -15°C or above 43°C. Cat D aircraft require ATC approval when R-4401 is active.	

ASOS 135.425	HOUSTON CENTER 126.8 327.8	UNICOM 122.8 (CTAF) 0
------------------------	--------------------------------------	---------------------------------



ELEV 151 TDZE 151		Uncontrolled helicopter and military airlift aircraft in vicinity of Hagler AAF and Shelby Auxiliary 1 Airfield.	
5 NM Holding Pattern		VGSI and RNAV glidepath not coincident (VGSI Angle 3.00/TCH 50).	
6000 2500		HILGA	
GP 3.00° TCH 40		CUPPA	
312°		NETTI	
132°		RWY 13	
2000		*1080	
7.2 NM		2.9 NM	
1.6 NM		1.2 NM	
CATEGORY		A B C D	
LPV DA		351-3/4 200 (200-3/4)	
LNAV/ VNAV DA		473-1 322 (400-1)	
LNAV MDA		580-1 429 (500-1) 580-1 1/4 429 (500-1 1/4)	
CIRCLING		620-1 700-1 700-1 1/2 720-2 469 (500-1) 549 (600-1) 549 (600-1 1/2) 569 (600-2)	

SC-4, 31 DEC 2020 to 28 JAN 2021

SC-4, 31 DEC 2020 to 28 JAN 2021