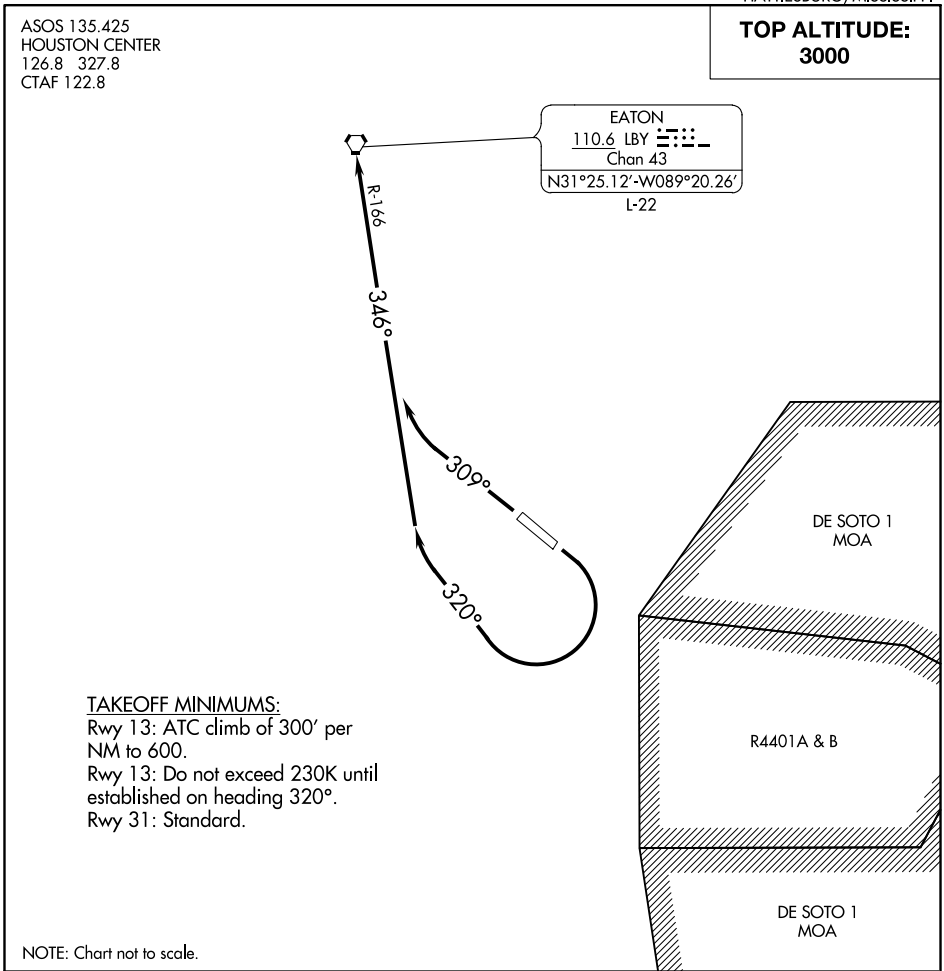


EATON TWO DEPARTURE



▼

DEPARTURE ROUTE DESCRIPTION

TAKEOFF RWY 13: Climbing right turn heading 320° and LBY VORTAC R-166 to LBY VORTAC. Thence. . . .

TAKEOFF RWY 31: Climb heading 309° and LBY VORTAC R-166 to LBY VORTAC. Thence. . . .

. . . .maintain 3000 or ATC assigned altitude. Expect clearance to filed altitude 10 minutes after departure.