

NEW ORLEANS, LOUISIANA

LOC I-NBG 109.5	APCH CRS 044°	Rwy ldg TDZE Arprt Elev 10,001 -2 2
---------------------------	-------------------------	---

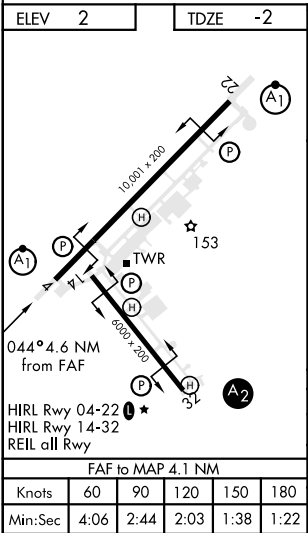
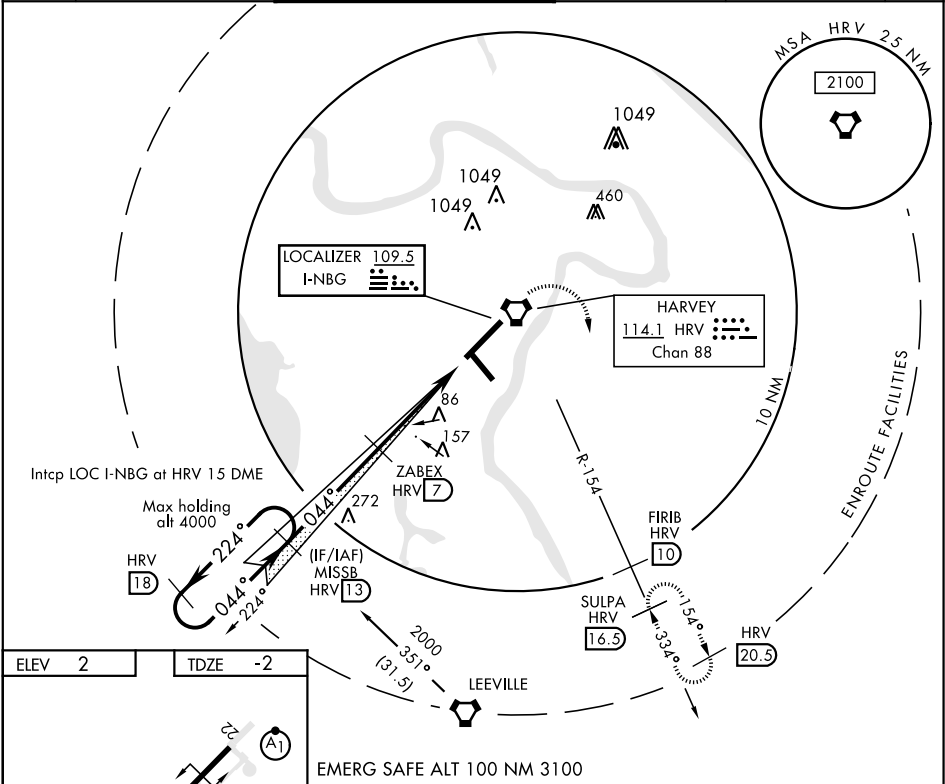
AL-630 [USN]

ILS or LOC/DME RWY 4

NEW ORLEANS NAS JRB
(ALVIN CALLENDER FLD) (KNBG)

⚠ * When ALS inop, increase vis CAT ABCDE to ¾ mile. ** When ALS inop, increase vis CAT AB to 1 mile; CAT CDE to 1½ miles. *** CAT E circling not authorized NW of Rwy 4-22.	ALSF-1 (A1)	MISSED APPROACH: Climb to 2100 direct HRV VORTAC then climbing right turn intercept HRV R-154 to SULPA and hold. Cross FIRB at 2000.
--	-----------------------	--

ATIS ★ 279.55	NEW ORLEANS APP CON 123.85 256.9	NAVY NEW ORLEANS TOWER ★ 0 123.8 340.2 (CTAF)	GND CON 121.6 270.35	CLNC DEL 128.35 263.0	ASR/ PAR
-------------------------	--	---	--------------------------------	---------------------------------	-------------



CATEGORY		A	B	C	D	E
S-ILS 4 *		198-½		200	(200-½)	
S-LOC 4 **		400-½ 402 (400-½)		400-¾ 402 (400-¾)		
*** CIRCLING		580-1 578 (600-1)		580-1½ 578 (600-1½)		640-2¼ 638 (700-2¼)

NEW ORLEANS, LOUISIANA

Amtd 2 13SEP18

29°50'N-90°02'W

NEW ORLEANS NAS JRB
(ALVIN CALLENDER FLD)

ILS or LOC/DME RWY 4

SC-4, 31 DEC 2020 to 28 JAN 2021

SC-4, 31 DEC 2020 to 28 JAN 2021