

VOR/DME RQR	APP CRS	Rwy Idg	9800
110.8	107°	TDZE	4
Chan 45		Apt Elev	4

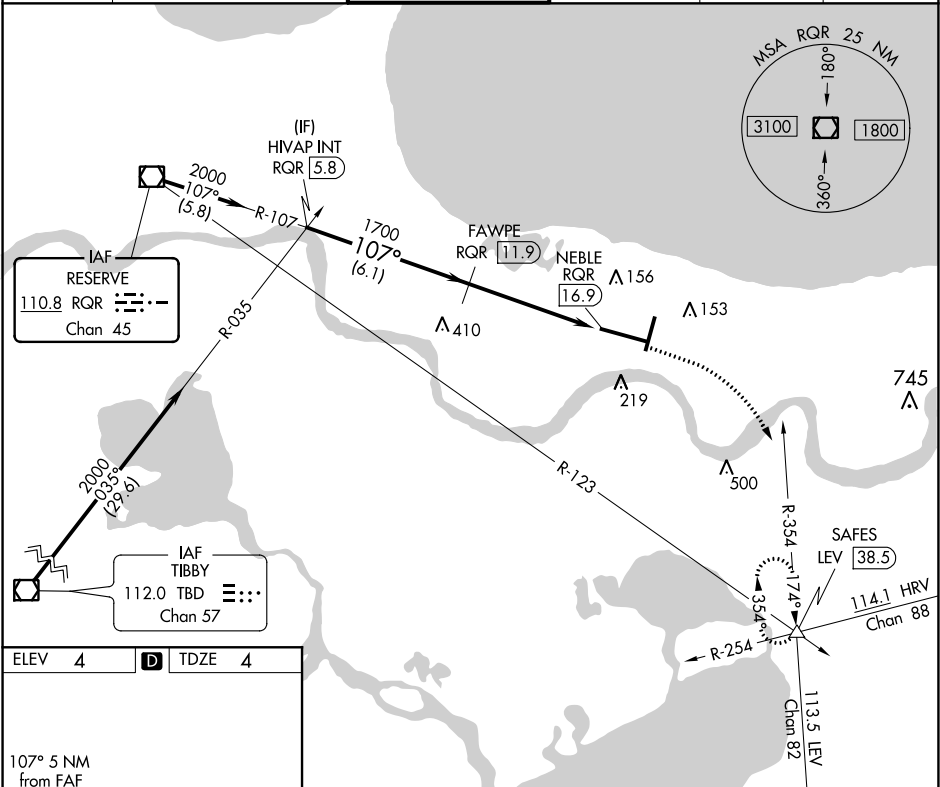
VOR/DME RWY 11

LOUIS ARMSTRONG NEW ORLEANS INTL (MSY)

ALSF-2

MISSED APPROACH: Climb to 800 then climbing right turn to 2000 on heading 130° and LEV VORTAC R-354 to SAFES INT/LEV 38.5 DME and hold.

D-ATIS	NEW ORLEANS APP CON	NEW ORLEANS TOWER	GND CON	CLNC DEL	CPDLC
127.55	WEST 125.5 350.35 EAST 133.15 290.3	119.5 254.3	121.9 273.525	126.575	



ELEV 4

TDZE 4

107° 5 NM from FAF

TWR 218

VGSI and descent angles not coincident (VGSI Angle 2.80/TCH 55).

LEV R-354

SAFES

2000

107°

FAWPE RQR 11.9

1700

3.09° TCH 55

RQR 15.5

NEBLE RQR 16.9

6.1 NM

3.7 NM

1.3 NM

CATEGORY	A	B	C	D
S-11	460/24	456 (500-1/2)		
CIRCLING	520-1	516 (600-1)	580-1 1/2 576 (600-1 1/2)	600-2 596 (600-2)