

WAAS CH <b>49006</b> <b>W29A</b>	APP CRS <b>287°</b>	Rwy Idg TDZE Apt Elev	<b>9800</b> <b>2</b> <b>4</b>
--	------------------------	-----------------------------	-------------------------------------

## RNAV (GPS) Y RWY 29

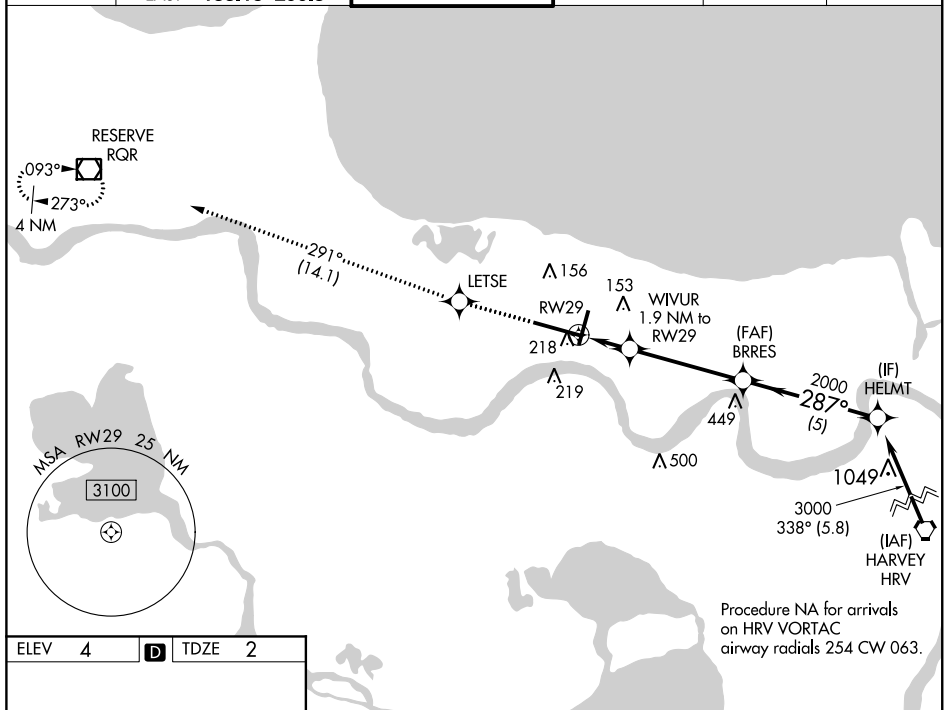
LOUIS ARMSTRONG NEW ORLEANS INTL (MSY)

**T** For uncompensated Baro-VNAV systems, LNAV/VNAV NA below -1°C (31°F) or above 54°C (130°F). DME/DME RNP-0.3 NA. For inop MALSR, increase Cat C/D visibility to 1¾ mile. \*\* RVR 1800 authorized with use of FD or AP or HUD to DA.

MALSR

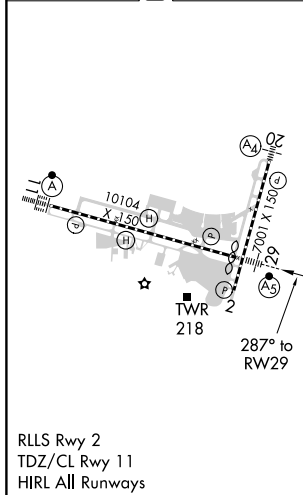
**MISSED APPROACH:** Climb to 3000  
direct LETSE and on track 291° to  
RQR VOR/DME and hold.

D-ATIS <b>127.55</b>	NEW ORLEANS APP CON WEST <b>125.5 350.35</b> EAST <b>133.15 290.3</b>	NEW ORLEANS TOWER <b>119.5 254.3</b>	GND CON <b>121.9 273.525</b>	CLNC DEL <b>126.575</b>	CPDLC
-------------------------	---	---	---------------------------------	----------------------------	-------



Procedure NA for arrivals  
on HRV VORTAC  
airway radials 254 CW 063.

ELEV	4	<b>D</b>	TDZE	2
------	---	----------	------	---



3000 ↑	LETSE ✦	IR 291°	RQR ◻	VGS1 and RNAV glidepath not coincident (VGS1 Angle 3.00/TCH 68).				
*LNAV only.				WTVUR 1.9 NM to RW29	BRRES 2000	HELMT 3000		
<p>*1.3 NM to RW29</p> <p>*640</p> <p>287°</p> <p>2000</p> <p>3000</p> <p>GP 3.00° TCH 53</p>								
CATEGORY		A		B		C		D
LPV DA **				202/24		200 (200-½)		
LNAV/ VNAV DA				380/40		378 (400-¾)		
LNAV MDA		480/24 478 (500-½)		480/50		478 (500-1)		
<b>C</b> CIRCLING		520-1 516 (600-1)		580-1½ 576 (600-1½)		600-2 596 (600-2)		