

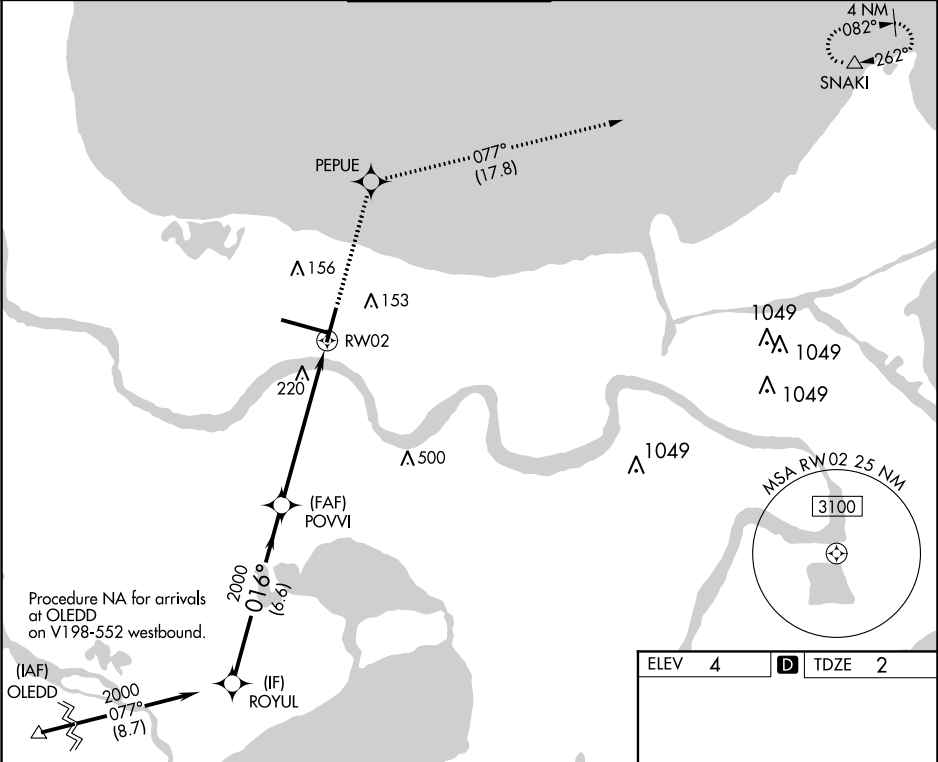
WAAS CH <b>49220</b> <b>W02A</b>	APP CRS <b>016°</b>	Rwy Idg <b>7001</b> TDZE <b>2</b> Apt Elev <b>4</b>
--	------------------------	---

RNAV (GPS) RWY 2

LOUIS ARMSTRONG NEW ORLEANS INTL (MSY)

<div><div>▼</div><div>For uncompensated Baro-VNAV systems, LNAV/VNAV NA below -1°C (31°F) or above 54°C (130°F). DME/DME RNP-0.3 NA. Helicopter visibility reduction below RVR 4000 NA.</div></div>	MISSED APPROACH: Climb to 3000 direct PEPUE and on track 077° to SNAKI and hold.
---	--

D-ATIS <b>127.55</b>	NEW ORLEANS APP CON WEST <b>125.5 350.35</b> EAST <b>133.15 290.3</b>	NEW ORLEANS TOWER <b>119.5 254.3</b>	GND CON <b>121.9 273.525</b>	CLNC DEL <b>126.575</b>	CPDLC
-------------------------	---	---	---------------------------------	----------------------------	-------



ROYUL

2000

GP 3.00°  
TCH 52

POVVI

2000

3000

↑

PEPUE

✦

tr 077°

↗

SNAKI

△

2000

016°

2000

6.6 NM

4.8 NM

1.3 NM

\*1.3 NM to RW02

RW02

\*LNAV only.

CATEGORY	A	B	C	D
LPV DA	398-1¼		396 (400-1¼)	
LNAV/VNAV DA	379-1¼		377 (400-1¼)	
LNAV MDA	480/55	478 (500-1)	480-1⅜	478 (500-1⅝)
CIRCLING	520-1	516 (600-1)	580-1½ 576 (600-½)	600-2 596 (600-2)

