

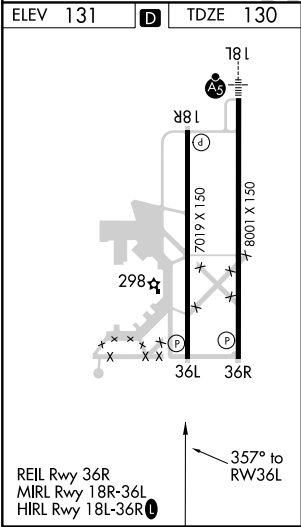
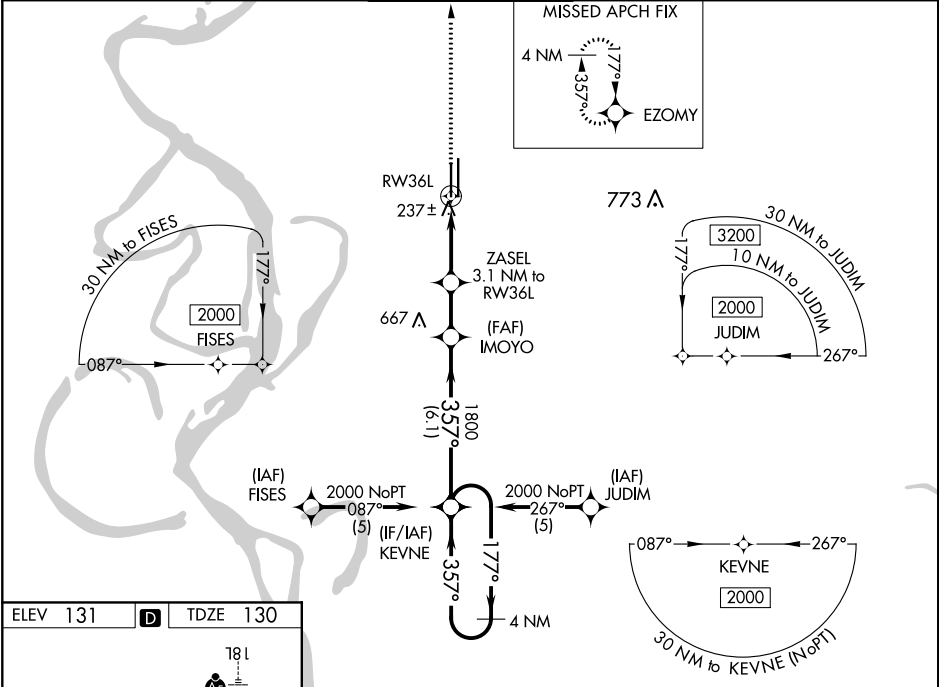
WAAS CH 77611 W36A	APP CRS 357°	Rwy Idg 7019 TDZE 130 Apt Elev 131
--	------------------------	---

RNAV (GPS) RWY 36L
GREENVILLE MID-DELTA (GLH)

⚠ For uncompensated Baro-VNAV systems, LNAV/VNAV NA below -15°C (5°F) or above 54°C (130°F).
⚠ DME/DME RNP-0.3 NA. When local altimeter setting not received, use Greenwood altimeter setting and increase LPV DA to 575, increase LNAV/VNAV DA to 620, increase all MDA 120 feet, increase LPV visibility all Cats ¼ mile, increase LNAV/VNAV visibility all Cats ½ mile, increase LNAV Cat C visibility ¼ mile, LNAV Cat D visibility ½ mile, and increase Circling Cat D visibility ¼ mile. VDP and Baro-VNAV NA when using Greenwood altimeter setting.

MISSED APPROACH:
Climb to 2000 direct EZOMY and hold.

ASOS 125.525	MEMPHIS CENTER 135.875 269.35	GREENVILLE TOWER ★ 119.0 (CTAF) 0 256.9	GND CON 121.8 256.9	UNICOM 122.95
------------------------	---	---	-------------------------------	-------------------------



2000	EZOMY	VGSI and RNAV glidepath angles not coincident (VGSI Angle 3.00/TCH 52).				4 NM Holding Pattern
*LNAV only.		IMOYO	KEVNE	177°	2000	
		ZASEL 3.1 NM to RW36L		357°		
		*1.2 NM to RW36L		1800		
		RW36L		*1160		
		1.2 NM	1.9 NM	2 NM	6.1 NM	
CATEGORY	A	B	C	D		
LPV DA	467-1¼ 337 (400-1¼)					
LNAV/VNAV DA	512-1¼ 382 (400-1¼)					
LNAV MDA	540-1 410 (500-1)		540-1¼ 410 (500-1¼)			
CIRCLING	600-1 469 (500-1)		600-1½ 469 (500-1½)		700-2 569 (600-2)	

SC-4, 31 DEC 2020 to 28 JAN 2021

SC-4, 31 DEC 2020 to 28 JAN 2021