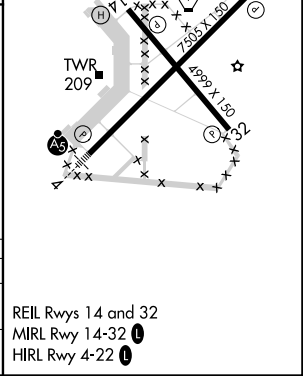
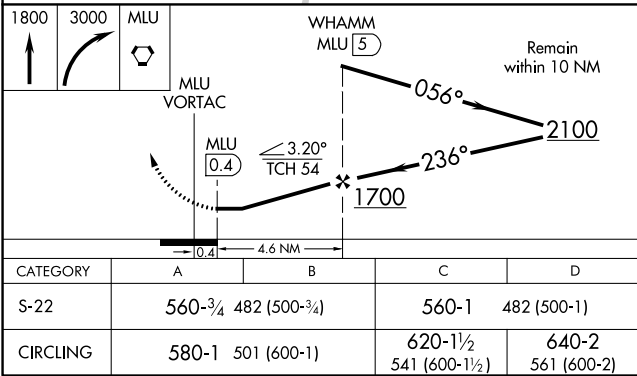
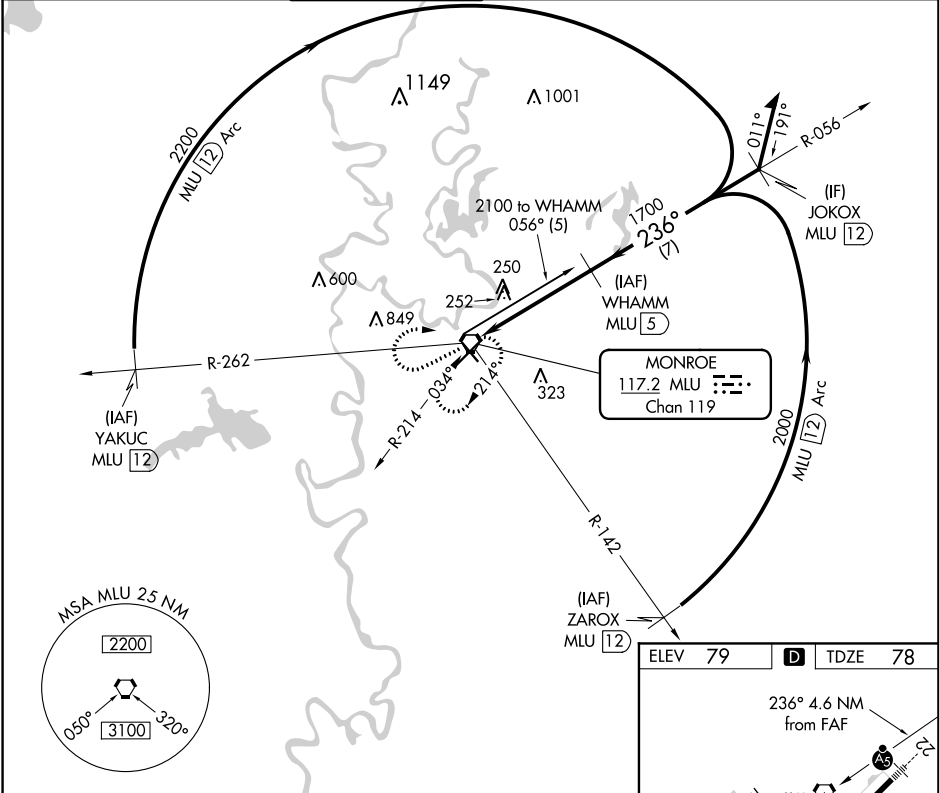


VORTAC MLU <b>117.2</b> Chan <b>119</b>	APP CRS <b>236°</b>	Rwy Idg <b>7505</b> TDZE <b>78</b> Apt Elev <b>79</b>
---	------------------------	---

VOR/DME RWY 22  
MONROE RGNL (MLU)

For inop MALS, increase S-22 Cats A and B visibility to 1 mile. Rwy 22 helicopter visibility reduction below 3/4 SM NA. ASR Circling Rwy 14 NA at night.		MISSED APPROACH: Climb to 1800 then climbing right turn to 3000 direct MLU VORTAC and hold.
--	--	---

ATIS <b>125.05</b>	MONROE APP CON ★ <b>118.15 290.475</b>	MONROE TOWER ★ <b>118.9 (CTAF) 0 257.8</b>	GND CON <b>121.9</b>	CLNC DEL <b>121.65</b>	UNICOM <b>122.95</b>
-----------------------	---	---	-------------------------	---------------------------	-------------------------



SC-4, 31 DEC 2020 to 28 JAN 2021

SC-4, 31 DEC 2020 to 28 JAN 2021