



WAAS CH <b>86500</b> <b>W01A</b>	APP CRS <b>011°</b>	Rwy Idg <b>9013</b> TDZE <b>289</b> Apt Elev <b>298</b>
--	------------------------	---

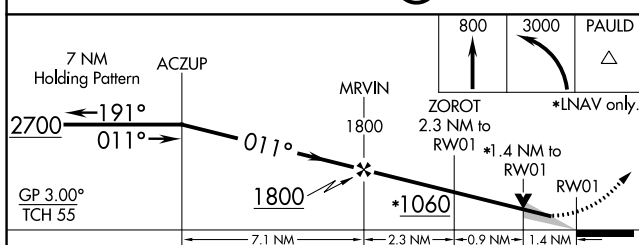
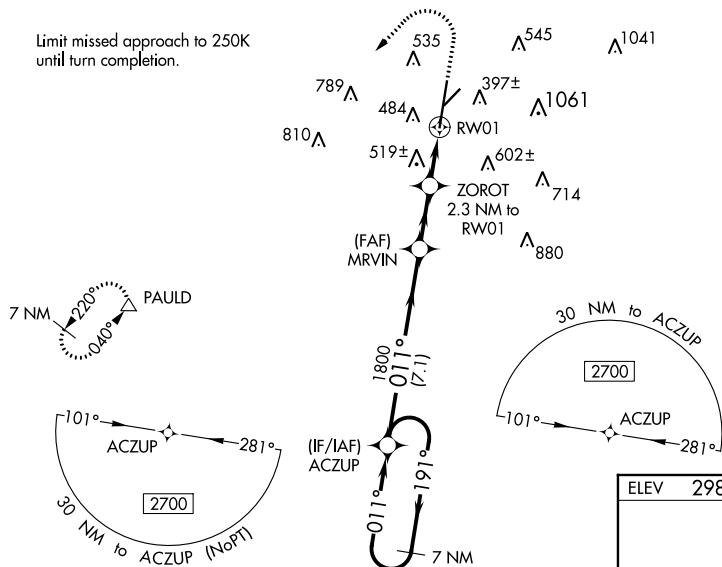
# RNAV (GPS) RWY 1

## KEY FIELD (MEI)

	<p>For uncompensated Baro-VNAV systems, LNAV/VNAV NA below -8°C (18°F) or above 54°C (130°F). Circling NA southeast of Rwy 1 and 22. DME/DME RNP-0.3 NA.</p> <p>When local altimeter setting not received, use Hattiesburg-Laurel Rgnl altimeter setting and increase all DA 138 feet and all MDA 140 feet, LPV all Cats visibility to RVR 3100, LNAV/VNAV all Cats and LNAV Cats C, D, and E visibilities to 1<math>\frac{1}{2}</math> mile, and Circling C visibility <math>\frac{1}{2}</math> mile and Cat D visibility <math>\frac{1}{4}</math> mile. For inop MALS increase LPV Cat E to RVR 4000, LNAV/VNAV Cat E visibility to RVR 6000, and LNAV Cat E visibility to 1<math>\frac{3}{4}</math> mile.</p> <p>For inop MALS when using Hattiesburg-Laurel Rgnl altimeter setting, increase LPV all Cats visibility to RVR 5000, LNAV/VNAV Cat E visibility to 1<math>\frac{1}{2}</math> mile, and LNAV Cat E visibility to 1<math>\frac{3}{4}</math> mile. VDP and Baro-VNAV NA when using Hattiesburg-Laurel Rgnl altimeter setting.</p> <p>Night landing: Rwy 22 NA. ** RVR 1800 authorized with use of FD or AP or HUD to DA, NA when using Hattiesburg-Laurel Rgnl altimeter setting.</p>	<p>MALS</p> 	<p><b>MISSED APPROACH:</b> Climb to 800 then climbing left turn to 3000 direct PAULD and hold.</p>
---	---	---	--

ATIS 126.475 291.675	MERIDIAN APP CON ★ 120.5 269.325	KEY TOWER ★ 133.975 (CTAF) 0 257.8	GND CON 121.9 348.6	CLNC DEL 121.9 348.6	UNICOM 122.95
-------------------------	-------------------------------------	---------------------------------------	------------------------	-------------------------	------------------

Limit missed approach to 250K until turn completion.



CATEGORY	A	B	C	D	E
LPV DA **	489/24		200 (200-½)		
LNAV/ VNAV DA	709/47		420 (500-1)		
LNAV MDA	780/24 491 (500-½)		780/50 491 (500-1)		
<b>C</b> CIRCLING	860-1 562 (600-1)	880-1 582 (600-1)	960-1¾ 662 (700-1¾)	1120-2¾ 822 (900-2¾)	1120-3 822 (900-3)

