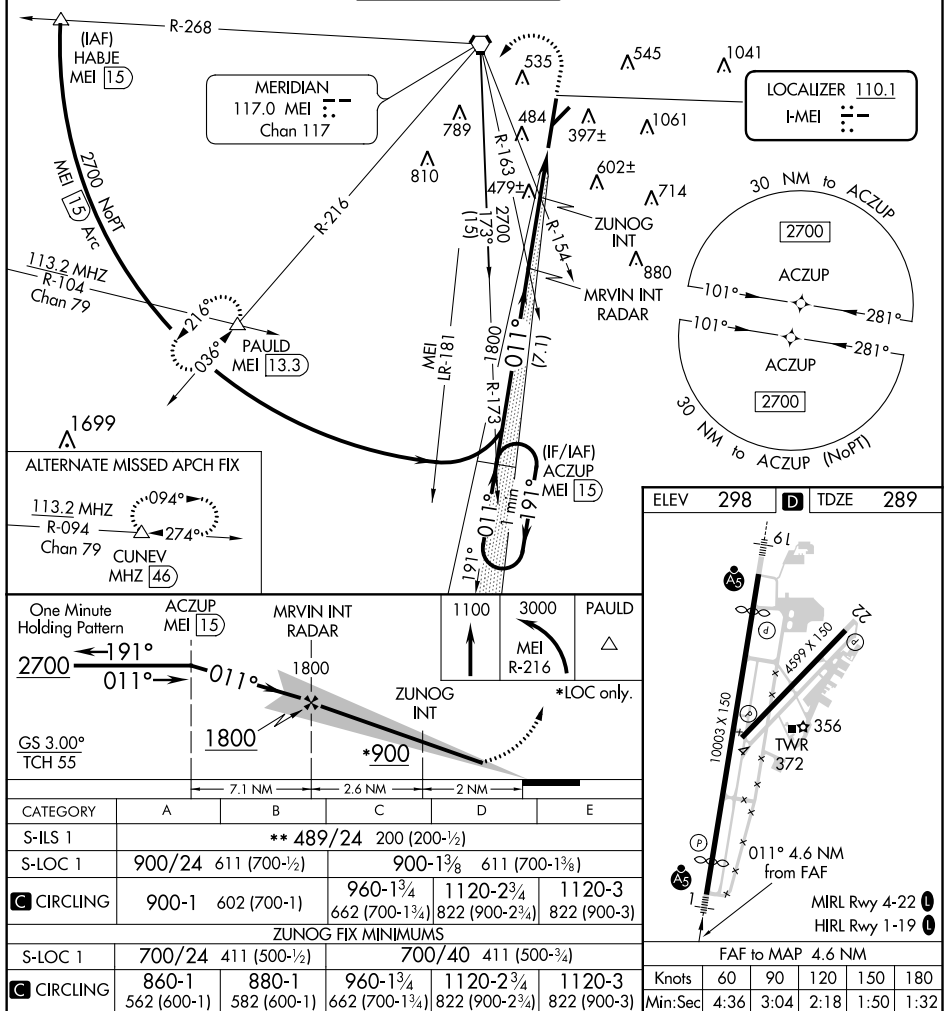


ILS or LOC RWY 1
KEY FIELD (MEI)

MALS R

MISSED APPROACH:
Climb to 1100 then
climbing left turn
to 3000 on MEI
VORTAC R-216 to
PAULD INT/MEI 13.3
DME and hold.

ATIS 126.475 291.675	MERIDIAN APP CON ★ 120.5 269.325	KEY TOWER ★ 133.975 (CTAF) 0 257.8	GND CON 121.9 348.6	CLNC DEL 121.9 348.6	UNICOM 122.95
-------------------------	-------------------------------------	---------------------------------------	------------------------	-------------------------	------------------



SC-4, 31 DEC 2020 to 28 JAN 2021

SC-4. 31 DEC 2020 to 28 JAN 2021