

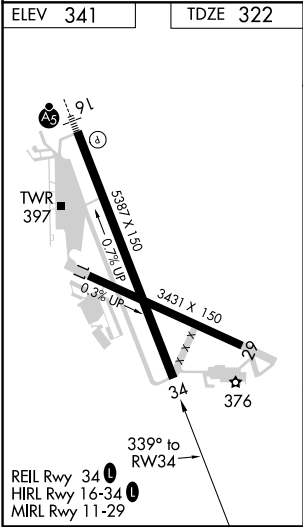
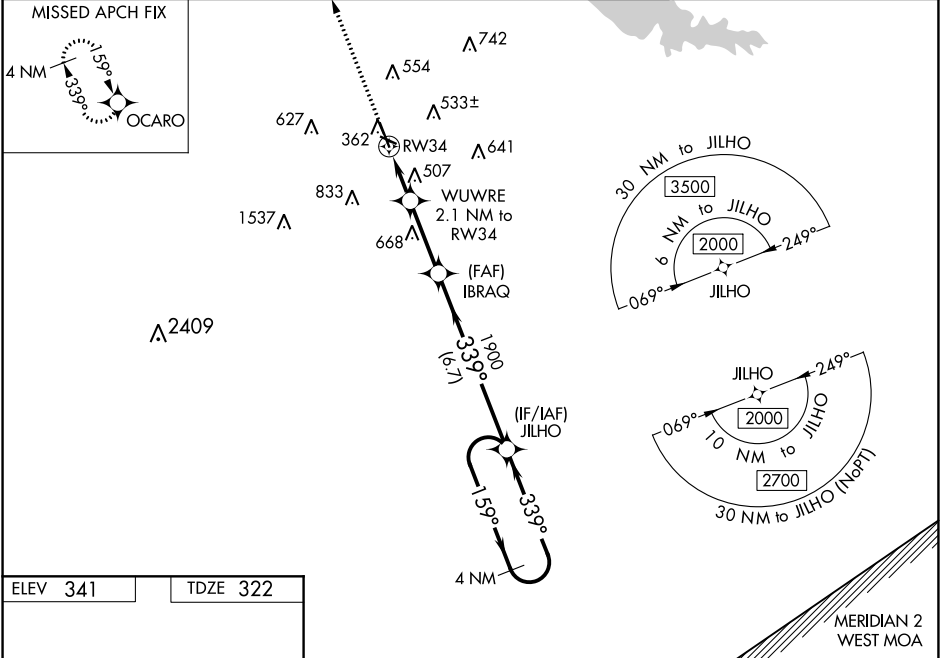
WAAS CH 56416 W34A	APP CRS 339°	Rwy Idg TDZE 322 Apt Elev 341
--	------------------------	---



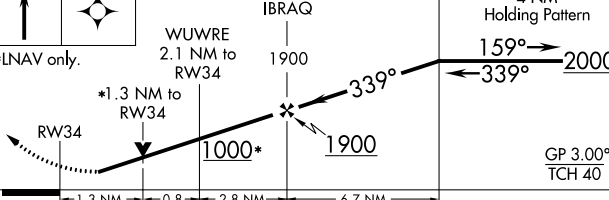

RNAV (GPS) RWY 34
HAWKINS FIELD (HKS)

⚠ For uncompensated Baro-VNAV systems, LNAV/VNAV NA below -6°C (22°F) or above 54°C (130°F). DME/DME RNP-0.3 NA. Baro-VNAV and VDP NA when using Jackson-Medgar Wiley Evers Intl altimeter setting. When local altimeter setting not received, use Jackson-Medgar Wiley Evers Intl altimeter setting and increase all DA 19 feet and all MDA 20 feet. Increase LPV and LNAV/VNAV all Cts visibility ¼ mile and Circling Cat C visibility ¼ mile. Rwy 34 helicopter visibility reduction below ¾ SM NA.

MISSED APPROACH:
Climb to 2000 direct
OCARO and hold.

ASOS 120.625	JACKSON APP CON ★ 123.9 319.2	HAWKINS TOWER ★ 119.65 (CTAF) 0 257.8	GND CON 121.9 239.0	CLNC DEL 121.9 (when twr closed)	UNICOM 122.95
------------------------	---	---	-------------------------------	---	-------------------------



2000	OCARO				
					
*LNAV only.					
					
CATEGORY		A	B	C	D
LPV DA		588-7/8 266 (300-7/8)			
LNAV/VNAV DA		670-1 1/8 348 (400-1 1/8)			
LNAV MDA		760-1 438 (500-1)	760-1 3/8 438 (500-1 3/8)		
 CIRCLING		860-1 519 (600-1)	880-1 539 (600-1)	1140-2 1/4 799 (800-2 1/4)	1320-3 979 (1000-3)

SC-4, 31 DEC 2020 to 28 JAN 2021

SC-4, 31 DEC 2020 to 28 JAN 2021