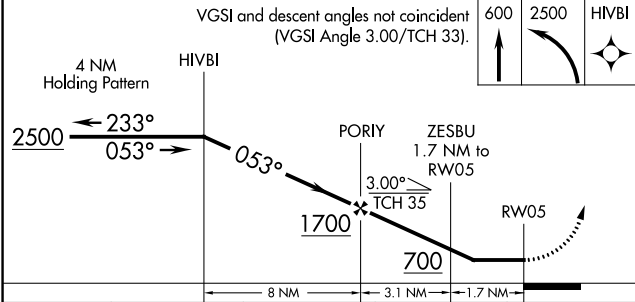
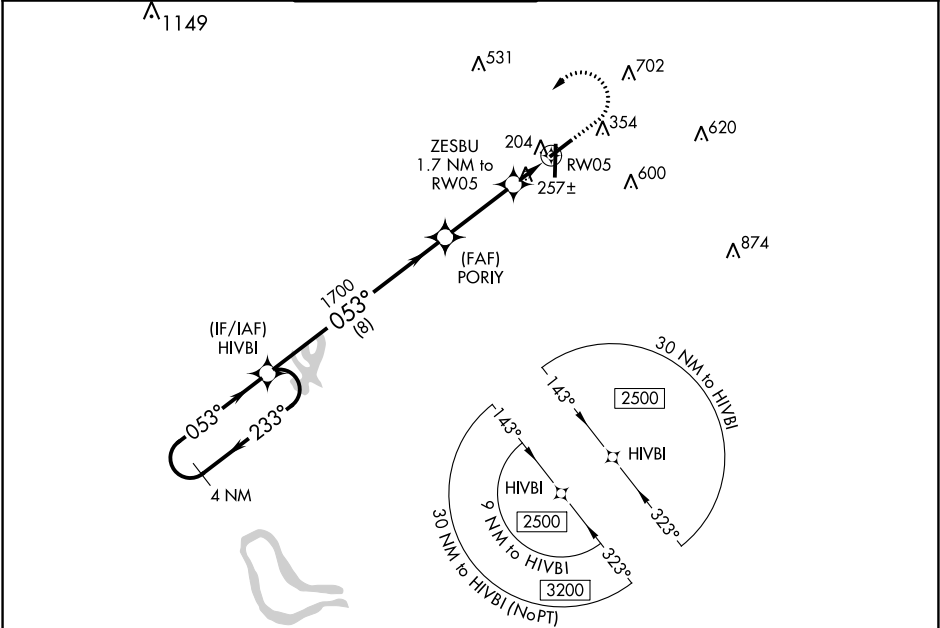


WAAS CH 69526 W05A	APP CRS 053°	Rwy Idg TDZE 149 Apt Elev 162	5011
--	------------------------	---	-------------

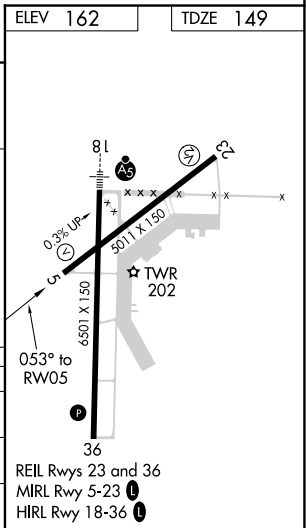
RNAV (GPS) RWY 5
GREENWOOD-LEFLORE (GWO)

V A	DME/DME RNP-0.3 NA. When local altimeter setting not received, use Greenville altimeter setting and increase all MDAS 120 feet and visibility LP Cats C/D ¾ SM, LNAV Cat C/D ¼ SM and Circling Cat C ½ SM. Straight-in Rwy 5 NA at night, Circling Rwy 5, 23, 27 NA at night. Rwy 5, 23, 27 helicopter visibility reduction below 1 SM NA.	MISSED APPROACH: Climb to 600 then climbing left turn to 2500 direct HIVBI and hold.
----------------------	--	--

ASOS 119.975	MEMPHIS CENTER 132.5 259.1	GREENWOOD TOWER ★ 118.35 (CTAF) 0 367.6	GND CON 125.55 373.4	CLNC DEL 125.55	UNICOM 122.95
------------------------	--------------------------------------	---	--------------------------------	---------------------------	-------------------------



CATEGORY	A	B	C	D
LP MDA	520-1 371 (400-1)			
LNAV MDA	540-1	391 (400-1)	540-1½	391 (400-1½)
CIRCLING	760-1	598 (600-1)	1000-2½ 838 (900-2½)	1120-3 958 (1000-3)



SC-4, 31 DEC 2020 to 28 JAN 2021

SC-4, 31 DEC 2020 to 28 JAN 2021