

NDB DXB <b>385</b>	APP CRS <b>354°</b>	Rwy Idg TDZE Apt Elev <b>5495</b> <b>197</b> <b>202</b>	<b>NDB RWY 36</b> BEAUREGARD RGNL (DRI)
-----------------------	------------------------	--	--

▼

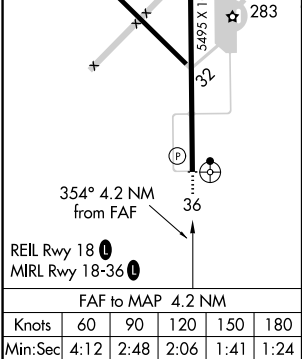
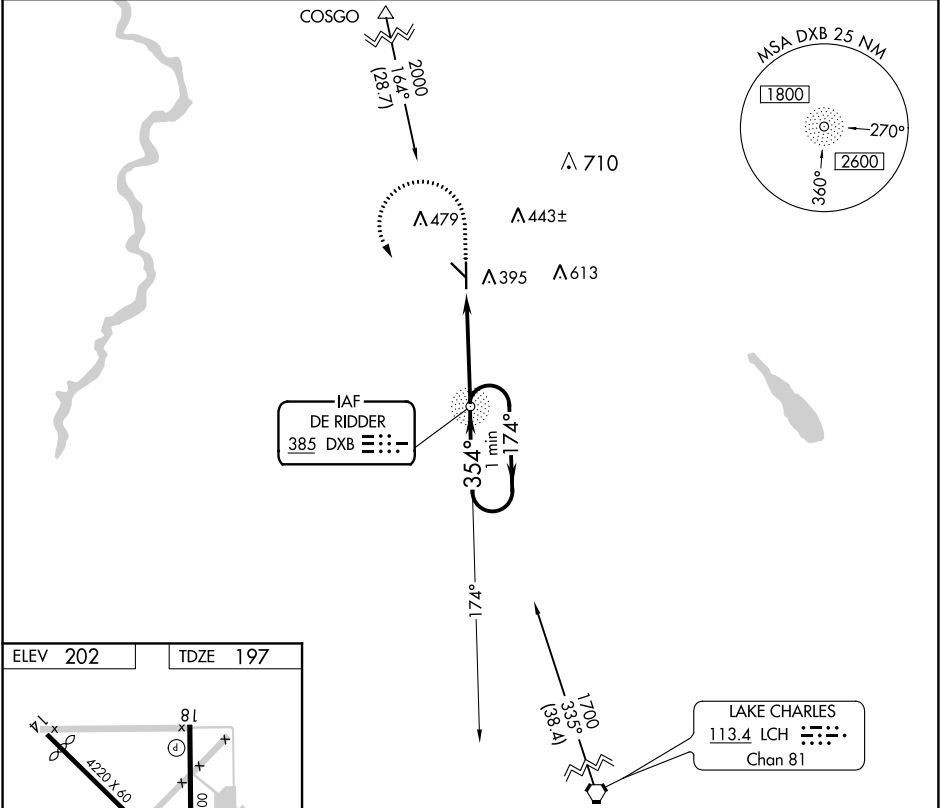
▲ NA

Inoperative table does not apply. Visibility reduction by helicopters NA. When local altimeter setting not received, use Fort Polk altimeter setting and increase all MDA 60 feet, and S-36 visibility Cat D ¼ mile.

ODALS

MISSED APPROACH: Climb to 1000 then climbing left turn to 1700 direct DXB NDB and hold.

AWOS-3PT <b>118.225</b>	POLK APP CON <b>123.7 261.3</b>	UNICOM <b>122.8 (CTAF) 0</b>
----------------------------	------------------------------------	---------------------------------



1000	1700	DXB	DXB NDB	One Minute Holding Pattern
174° → 1700				
← 354°				
VGSI and descent angles not coincident (VGSI Angle 3.00/TCH 50).				
4.2 NM				
CATEGORY	A	B	C	D
S-36	700-1	503 (500-1)	700-1½	503 (500-1½)
CIRCLING	720-1	518 (600-1)	720-1½	780-2
			518 (600-1½)	578 (600-2)

SC-4, 31 DEC 2020 to 28 JAN 2021

SC-4, 31 DEC 2020 to 28 JAN 2021