

COLUMBUS, MISSISSIPPI

HI-ILS or LOC Z RWY 31C

LOC I-TBB 108.7	APCH CRS 315°	31C Rwy Idg 12,004 TDZE 213 Arpt Elev 218	31R 8001 218 218
---------------------------	-------------------------	---	--

JAL-91 [USAF]

COLUMBUS AFB (KCBM)

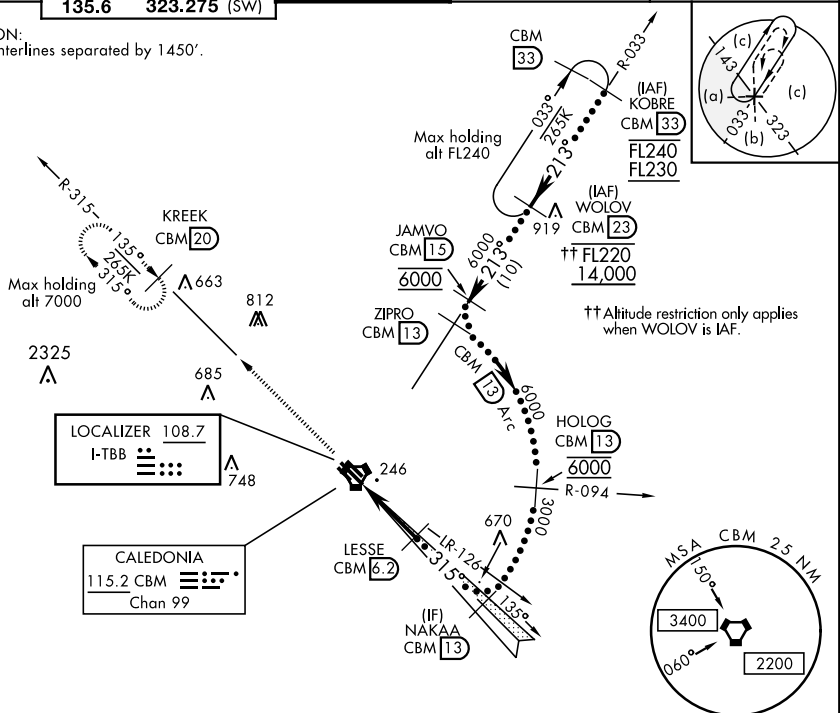
- ▼ * When ALS inop, increase RVR to 40, vis to ¾ mile.
 ** When ALS inop, increase RVR to 55, vis to 1 mile.



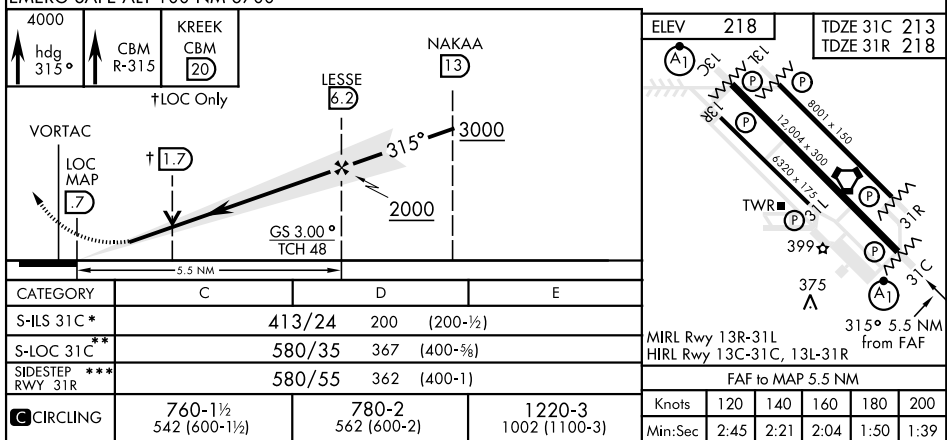
MISSED APPROACH: Climb heading 315° to intercept the VOR/TAC CBM R-315 outbound to KREEK (CBM R-315/20) and hold. Maintain 4000.

ATIS 115.2 273.5	COLUMBUS APP CON 126.075 239.25 (N) 134.55 350.3 (SE) 135.6 323.275 (SW)	COLUMBUS TOWER 126.65 379.925	GND CON 121.9 275.8	CLNC DEL 269.55
----------------------------	--	---	-------------------------------	---------------------------

*** CAUTION:
Rwy centerlines separated by 1450'.



EMERG SAFE ALT 100 NM 3700



COLUMBUS, MISSISSIPPI

33° 39' N-88° 27' W

COLUMBUS AFB (KCBM)

Amdt 1 13AUG20

HI-ILS or LOC Z RWY 31C