

COLUMBUS, MISSISSIPPI

HI-ILS or LOC Z RWY 13C

| | | | | | | |
|--------------|-------------|-----------|--------|------|---------------|---------------------|
| LOC I-CBM | APCH CRS | Rwy Idg | 12,004 | 8001 | | |
| <u>109.3</u> | <u>135°</u> | TDZE | 196 | 194 | JAL-91 [USAF] | COLUMBUS AFB (KCBM) |
| | | Arpt Elev | 218 | 218 | | |

T* When ALS inop. increase RVR to 40, vis to 3/4 mile

** When ALS inop. increase vjs to 1 3/8 miles.

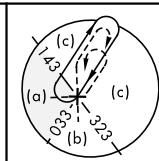


MISSED APPROACH: Climb heading 135° to intercept the CBM VORTAC R-135 outbound to WEEWA (CBM R-135/20) and hold. Maintain 4000

| | | | | |
|---------------------|---|----------------------------------|------------------------|--------------------|
| ATIS 115.2 273.5 | COLUMBUS APP CON 126.075 239.25 (N) 134.55 350.3 (SE) 135.6 323.275 (SW) | COLUMBUS TOWER 126.65 379.925 | GND CON 121.9 275.8 | CLNC DEL 269.55 |
|---------------------|---|----------------------------------|------------------------|--------------------|

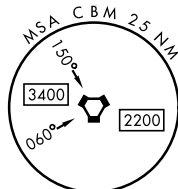
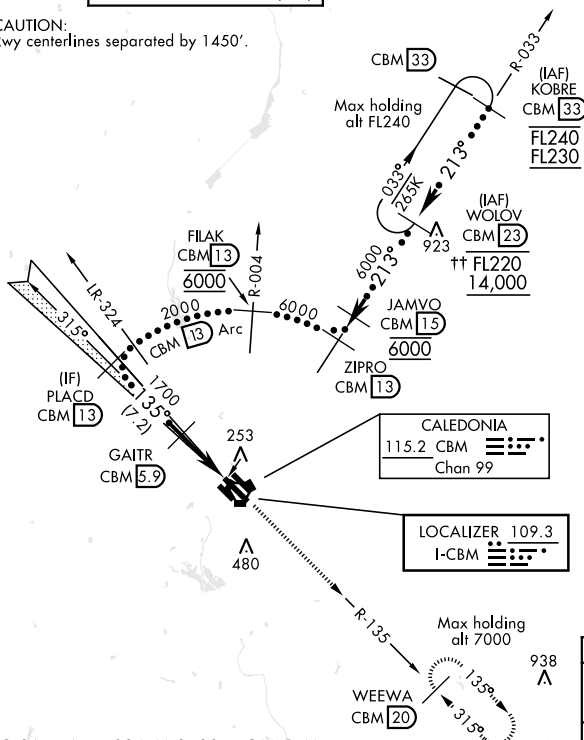
*** CAUTION-

Rwy centerlines separated by 1450'.

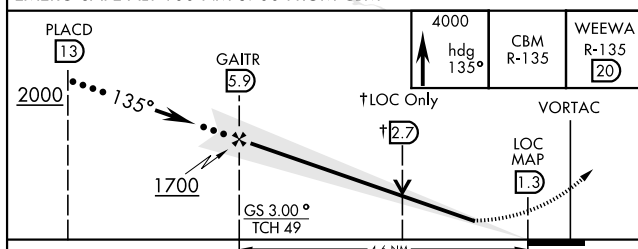


886

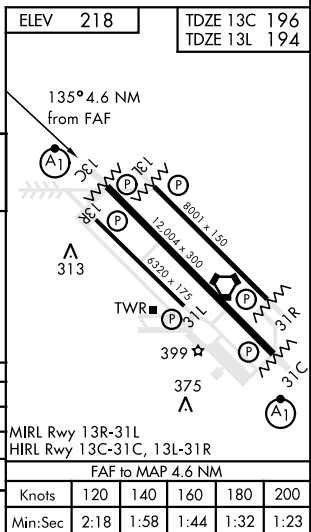
†† Altitude restriction only applies when WOLOV is IAF.



EMERG SAFE ALT 100 NM 3700 FROM CBM



| CATEGORY | C | D | E |
|-------------------------|------------------------|----------------------|-------------------------|
| S-ILS 13C * | 396/24 | 200 | (200-½) |
| S-LOC 13C ** | 680/50 | 484 | (500-1) |
| SIDESTEP *** RWY 13L | 680-1⅓ | 486 | (500-1⅓) |
| C CIRCLING | 760-1½ 542 (600-1½) | 780-2 562 (600-2) | 1220-3 1002 (1100-3) |



COLUMBUS, MISSISSIPPI

33° 39'N-88° 27'W

COLUMBUS AFB (KCBM)

Amdt 1 13AUG20

HI-ILS or LOC Z RWY 13C

SC-4, 31 DEC 2020 to 28 JAN 2021

SC-4, 31 DEC 2020 to 28 JAN 2021