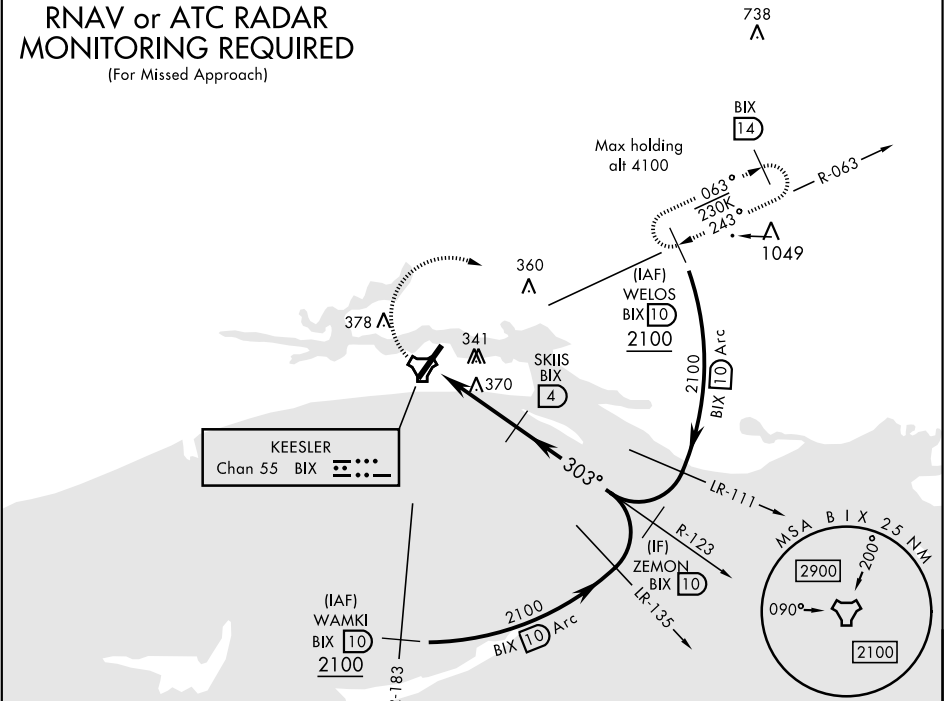


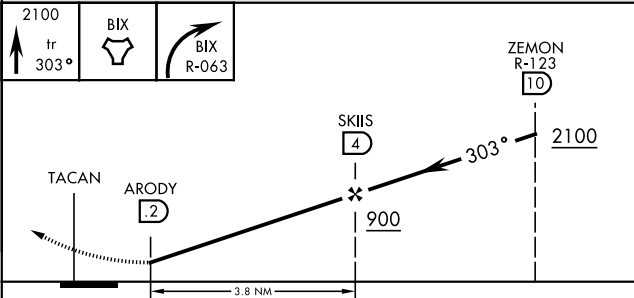
TACAN BIX Chan 55	APCH CRS 303°	Rwy ldg THRE Arpt Elev N/A N/A 33	AL-49 [USAF]	KEESLER AFB (KBIX)
----------------------	------------------	--	--------------	--------------------

MISSED APPROACH: Climb tracking 303° to BIX TACAN then right turn to intercept BIX R-063 climbing to 2100 to 10 DME (WELOS) and hold.				
ATIS 281.55	GULFPORT APP CON 124.6 354.1 (130°- 309°) 127.5 254.25 (310°- 129°)	KEESLER TOWER ★ 120.75 269.075	GND CON 121.8 275.8	CLNC DEL 121.8 275.8

RNAV or ATC RADAR
MONITORING REQUIRED
(For Missed Approach)



EMERG SAFE ALT 100 NM 3100



CATEGORY	A	B	C	D
640-1	647 (700-1)	667 (700-1 3/4)	700-2	700-2

