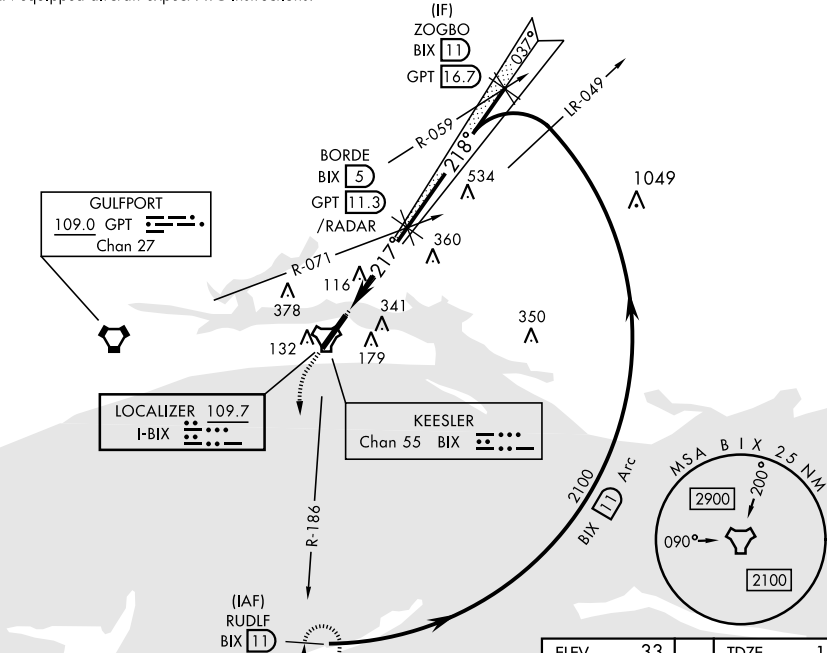


BILOXI, MISSISSIPPI

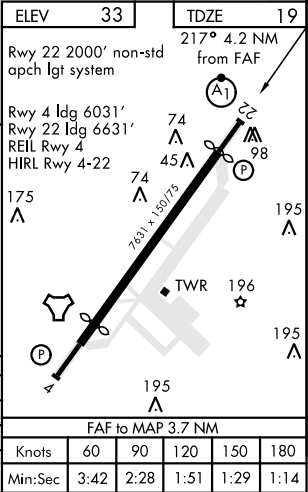
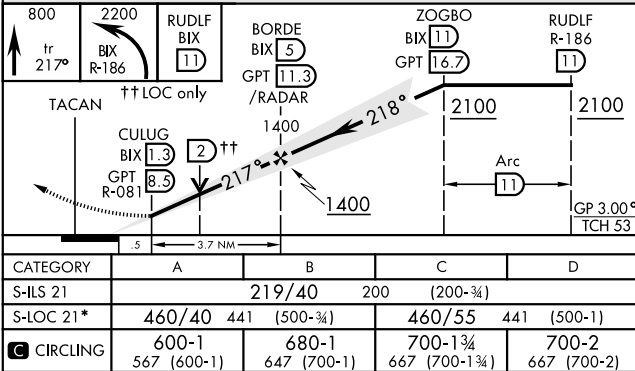
ILS or LOC RWY 22

LOC I-BIX <b>109.7</b>	APCH CRS <b>217°</b>	Rwy ldg TDZE Arprt Elev <b>6631</b> <b>19</b> <b>33</b>	AL-49 [USAF]	KEESLER AFB (KBIX)
* When ALS inop, increase CAT AB RVR to 55, vis to 1 mile, CAT CD vis to 1½ miles.			ALS-1 	† MISSED APPROACH: Climb to 800 tracking 217°, upon reaching 800 turn left to intercept BIX TACAN R-186 climbing to 2200 to 11 DME (RUDLF) and hold.
ATIS <b>281.55</b>	GULFPORT APP CON <b>124.6 354.1</b> (130°- 309°) <b>127.5 254.25</b> (310°- 129°)	KEESLER TOWER ★ <b>120.75 269.075</b>	GND CON <b>121.8 275.8</b>	CLNC DEL <b>121.8 275.8</b>

† Missed approach requires use of RNAV or ATC RADAR monitoring.  
Non-TACAN equipped aircraft expect ATC instructions.



RADAR or DME REQUIRED  
EMERG SAFE ALT 100 NM 3100



BILOXI, MISSISSIPPI

Orig 27 FEB20

30° 25' N-88° 55' W

KEESLER AFB (KBIX)

ILS or LOC RWY 22

SC-4, 31 DEC 2020 to 28 JAN 2021