

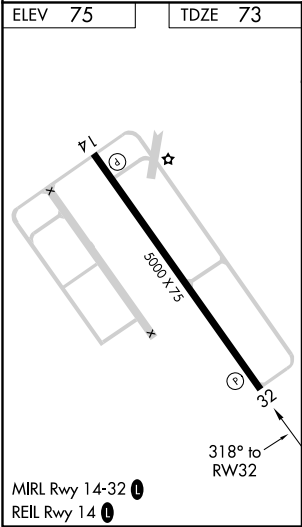
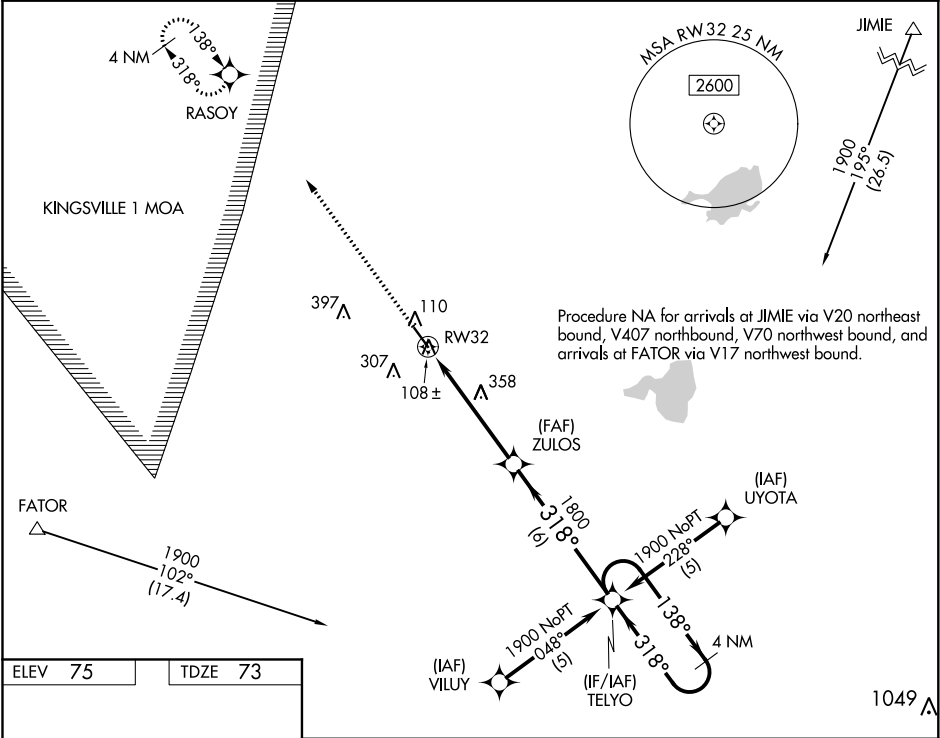
WAAS CH 70701 W32A	APP CRS 318°	Rwy Idg TDZE 73 Apt Elev 75
--	------------------------	---

RNAV (GPS) RWY 32

SOUTH TEXAS INTL AT EDINBURG (EBG)

<div><div></div><div>Visibility reduction by helicopters NA. DME/DME RNP-0.3 NA. For uncompensated Baro-VNAV systems, LNAV/VNAV NA below -15°C (5°F) or above 48°C (120°F).</div></div>	<div>MISSED APPROACH: Climb to 1900 direct RASOY and hold.</div>
---	--

AWOS-3 118.025	CORPUS APP CON 121.0 377.2	UNICOM 122.8 (CTAF) 0
--------------------------	--------------------------------------	---------------------------------



1900	RASOY	VGSI and RNAV glidepath not coincident.			
		ZULOS		TELYO	
		*RNAV only. *1.8 NM to RW32		4 NM Holding Pattern	
		RW32		138° → 1900	
		1.8 3.4 NM 6 NM		← 318°	
				GP 3.00° TCH 45	
CATEGORY	A	B	C	D	
LPV DA	323-3/4 250 (300-3/4)				
LNAV/VNAV DA	361-1 288 (300-1)				
LNAV MDA	660-1	587 (600-1)	660-1 1/2 587 (600-1 1/2)	660-1 3/4 587 (600-1 3/4)	
CIRCLING	660-1	585 (600-1)	660-1 1/2 585 (600-1 1/2)	660-2 585 (600-2)	

SC-3, 31 DEC 2020 to 28 JAN 2021

SC-3, 31 DEC 2020 to 28 JAN 2021