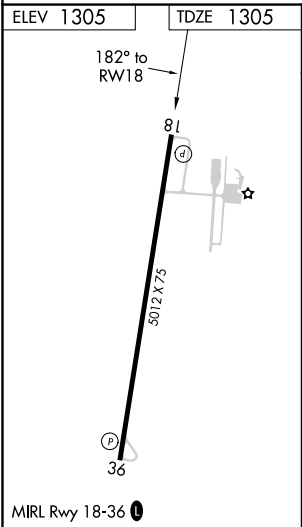
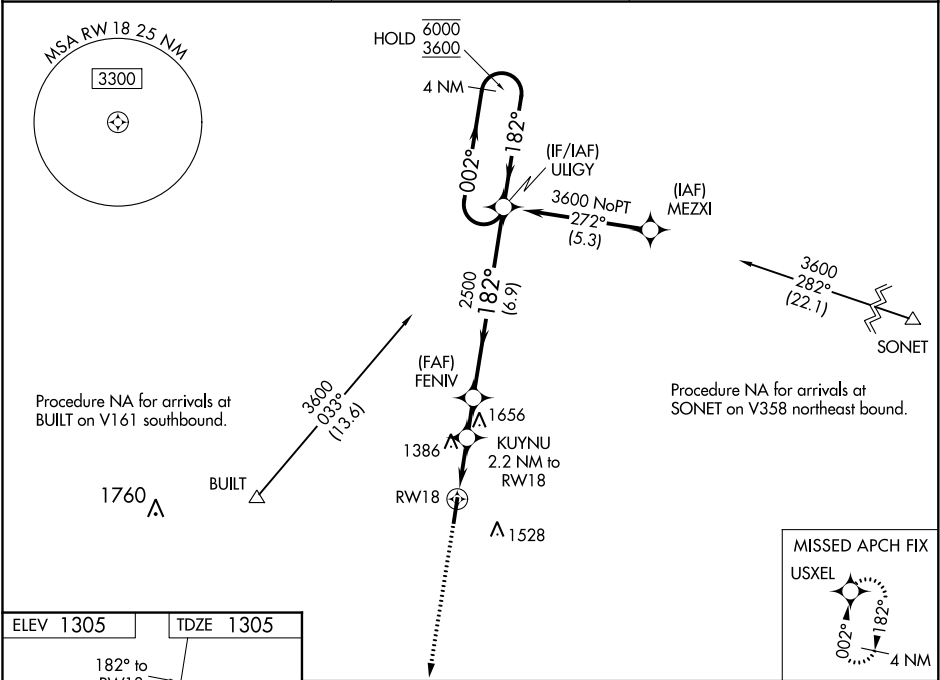


WAAS CH <b>72629</b> <b>W18A</b>	APP CRS <b>182°</b>	Rwy Idg TDZE <b>1305</b> Apt Elev <b>1305</b>
--	------------------------	---

RNAV (GPS) RWY 18  
HAMILTON MUNI (MNZ)

RNP APCH. ▼ Rwy 18 helicopter visibility reduction below ¾ SM NA. For uncompensated Baro-VNAV systems, LNAV/VNAV NA below -17°C or above 54°C.	MISSED APPROACH: Climb to 3100 direct USXEL and hold.
--	---

AWOS-3 <b>118.525</b>	GRAY APP CON <b>120.075 323.15</b>	UNICOM <b>122.7 (CTAF) 0</b>
--------------------------	---------------------------------------	---------------------------------



3100 USXEL	KUYNU 2.2 NM to RW18	FENIV 2500	UUGY 4 NM Holding Pattern	6000 3600
*LNAV only.	*0.9 NM to RW18	*2040	2500	GP 3.00° TCH 40
0.9	1.3 NM	1.4 NM	6.9 NM	
CATEGORY	A	B	C	D
LPV DA	1555-1	250 (300-1)		NA
LNAV/VNAV DA	1555-1	250 (300-1)		NA
LNAV MDA	1640-1	335 (400-1)		NA
CIRCLING	1680-1 375 (400-1)	1760-1 455 (500-1)	1900-1½ 595 (600-1½)	NA