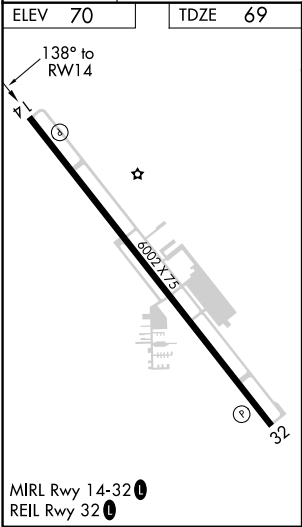
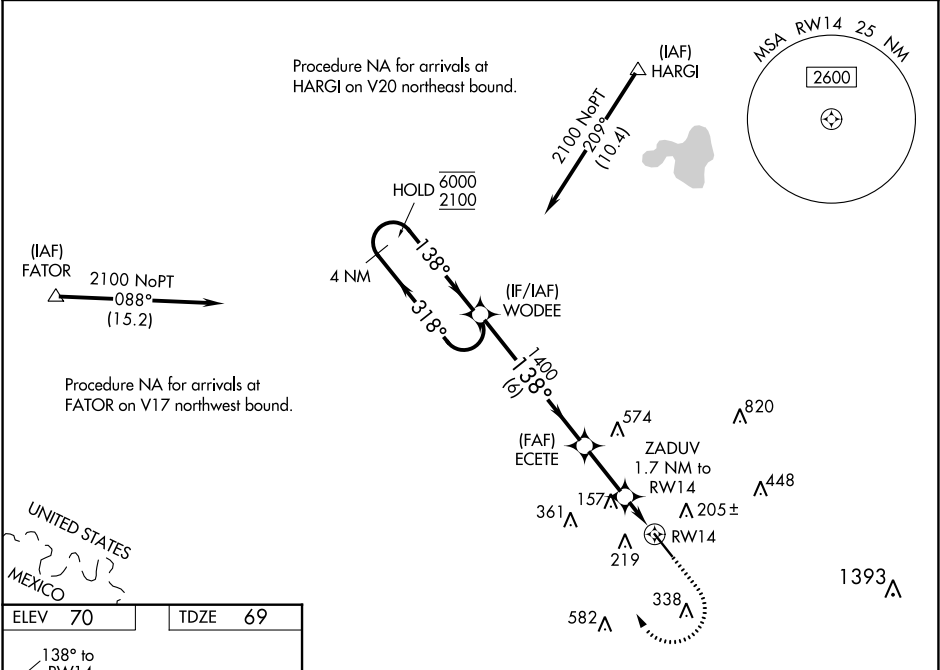


WAAS CH <b>70341</b> <b>W14A</b>	APP CRS <b>138°</b>	Rwy Idg TDZE Apt Elev	<b>6002</b> <b>69</b> <b>70</b>
--	------------------------	-----------------------------	---------------------------------------

RNAV (GPS) RWY 14  
MID VALLEY (TXW)

RNP APCH.		MISSED APPROACH: Climb to 900 then climbing right turn to 2100 direct WODEE and hold.	
Rwy 14 helicopter visibility reduction below ¾ SM NA. For uncompensated Baro-VNAV systems, LNAV/VNAV NA below -15°C or above 54°C.			
AWOS-3 <b>118.575</b>	VALLEY APP CON <b>121.0 284.7</b>	CLNC DEL <b>125.95</b>	UNICOM <b>122.8 (CTAF) 0</b>



4 NM Holding Pattern		WODEE	900	2100	WODEE
6000 2100		← 318° → 138°	1400	ZADUV 1.7 NM to RWY14	*LNAV only.
GP 3.00° TCH 50		1400	*660	*0.9 NM to RWY14	
		6 NM	2.3 NM	0.8 NM	0.9 NM
CATEGORY	A	B	C	D	
LPV DA	319-¾ 250 (300-¾)				
LNAV/VNAV DA	331-⅞ 262 (300-⅞)				
LNAV MDA	420-1 351 (400-1)				
CIRCLING	620-1	550 (600-1)	700-1¾ 630 (700-1¾)	940-2¾ 870 (900-2¾)	

SC-3, 31 DEC 2020 to 28 JAN 2021

SC-3, 31 DEC 2020 to 28 JAN 2021