

WAAS CH <b>49108</b> <b>W35A</b>	APP CRS <b>353°</b>	Rwy Idg TDZE <b>1823</b> Apt Elev <b>1827</b>
--	------------------------	---

RNAV (GPS) RWY 35

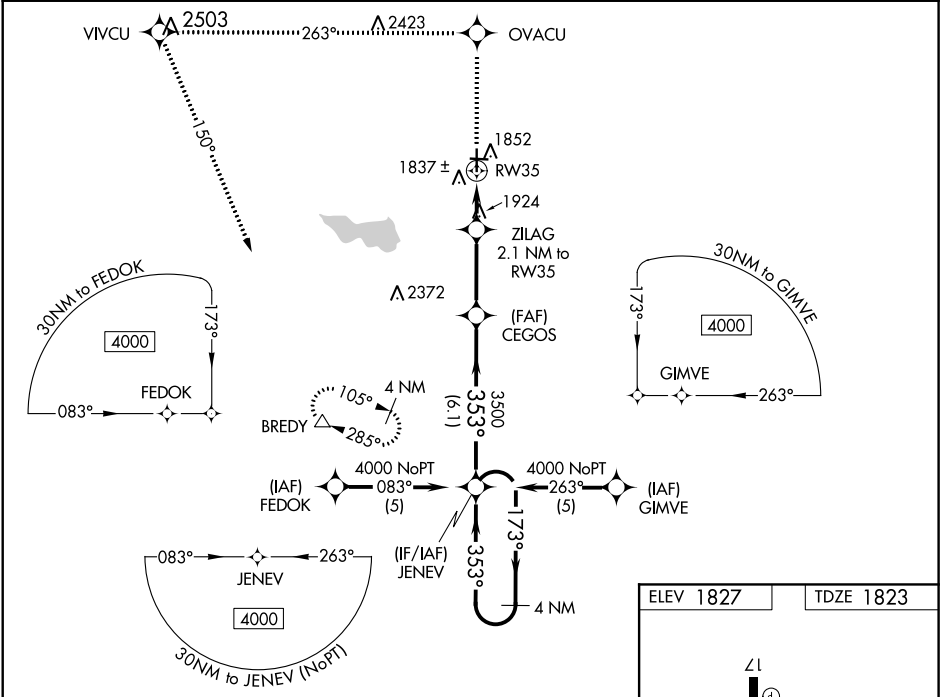
CURTIS FIELD (BBD)

RNP APCH.

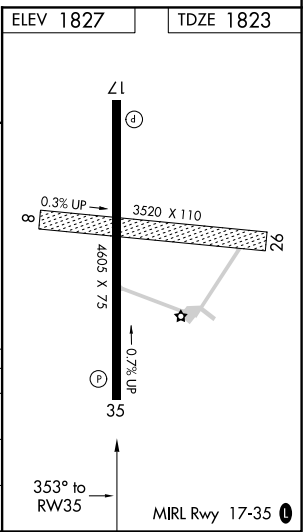
For uncompensated Baro-VNAV systems, LNAV/VNAV NA below -18°C (0°F) or above 54°C (130°F). When local altimeter setting not received, use Junction altimeter setting and increase all DA/MDA 120 feet, increase LPV, LNAV/VNAV all Cats visibility ½ mile, LNAV Cat C visibility ¼ mile. Baro-VNAV NA when using Junction altimeter setting. Rwy 35 helicopter visibility reduction below ¾ SM NA.

MISSED APPROACH: Climb to 4000 direct OVACU and via 263° track to VIVCU and left turn via 150° track to BREDY and hold.

AWOS-3 <b>118.375</b>	HOUSTON CENTER <b>132.35 317.5</b>	UNICOM <b>122.8 (CTAF) 0</b>
--------------------------	---------------------------------------	---------------------------------



4000	OVACU	tr 263°	VIVCU	tr 150°	BREDY	JENEV	4 NM Holding Pattern
*LNAV only.							
RW35 2.1 NM to RW35 ZILAG 3500 173° 353° 4000 GP 3.00° TCH 48							
2500* 3500 2.1 NM 3 NM 6.1 NM							
CATEGORY	A	B	C	D			
LPV DA	2073-1 250 (300-1)			NA			
LNAV/VNAV DA	2107-1 284 (300-1)			NA			
LNAV MDA	2240-1	417 (500-1)	2240-1¼ 417 (500-1¼)	NA			



SC-3, 31 DEC 2020 to 28 JAN 2021

SC-3, 31 DEC 2020 to 28 JAN 2021