

WAAS CH 50433 W31A	APP CRS 307°	Rwy Idg TDZE 589 Apt Elev 598
--	------------------------	---

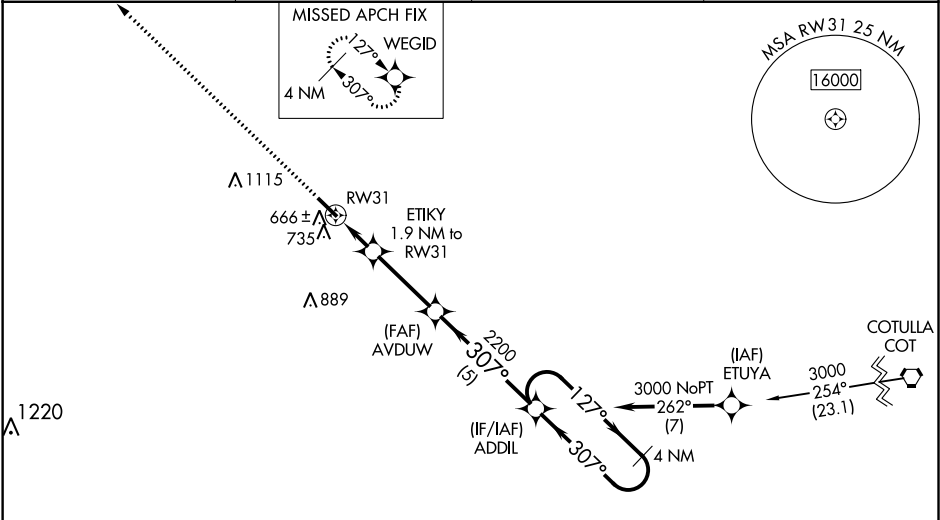
RNAV (GPS) RWY 31
DIMMIT COUNTY (CZT)

NA

Baro-VNAV NA. DME/DME RNP-0.3 NA. Use Cotulla altimeter setting; when not received use Uvalde altimeter setting and increase all DA 52 feet, all MDA 60 feet and increase LPV all Cats, LNAV/VNAV all Cats, and Circling Cat C visibility ¼ mile. Helicopter visibility reduction below ¾ SM NA.

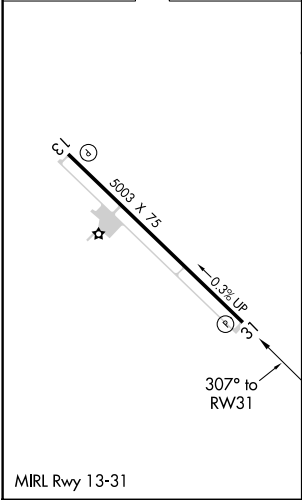
MISSED APPROACH:
Climb to 3000 direct WEGID and hold.

AWOS-3 119.625	COT ASOS 118.325	HOUSTON CENTER 127.8 307.5	UNICOM 122.8 (CTAF)
--------------------------	----------------------------	--------------------------------------	-------------------------------



Procedure NA for arrivals at COT VORTAC on V17 northbound.

ELEV 598	TDZE 589
-----------------	-----------------



3000 ↑	WEGID ✦				
-----------	------------	--	--	--	--