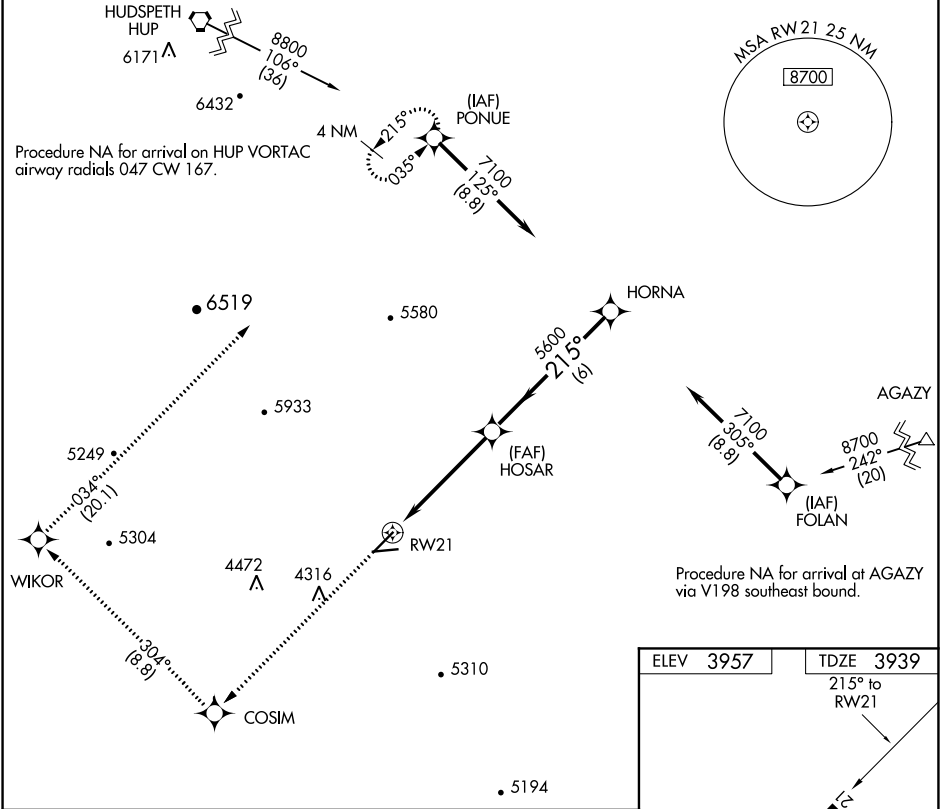


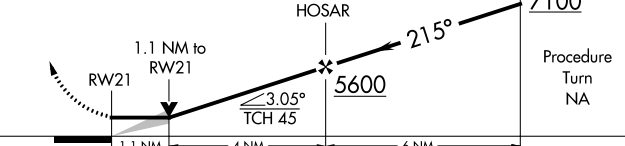
APP CRS 215°	Rwy Idg TDZE Apt Elev	6005 3939 3957
------------------------	-----------------------------	---

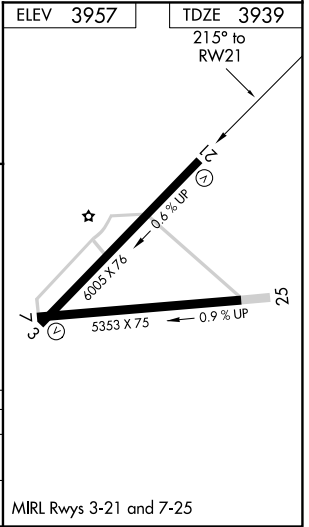
RNAV (GPS) RWY 21
CULBERSON COUNTY (VHN)

NA Obtain local altimeter setting on CTAF; when not received, procedure NA. DME/DME RNP-0.3 NA. Night landing: Rwy 7, 25 NA.	MISSED APPROACH: Climb to 8800 direct COSIM WP, and via 304° track to WIKOR WP and via 034° track to PONUE WP and hold.
---	---

AWOS-3PT 119.925	ALBUQUERQUE CENTER 135.875 292.15	CTAF 122.9
----------------------------	---	----------------------



8800	COSIM	tr 304°	WIKOR	tr 034°	PONUE	VGSI and descent angles not coincident (VGSI angle 3.00/TCH 24).	
							
CATEGORY	A		B		C		D
LNAV MDA	4300-1 361 (400-1)						4300-1¼ 361 (400-1¼)
CIRCLING	4440-1 483 (500-1)		4460-1 503 (600-1)		4480-1½ 523 (600-1½)		4840-3 883 (900-3)



SC-3, 31 DEC 2020 to 28 JAN 2021

SC-3, 31 DEC 2020 to 28 JAN 2021