

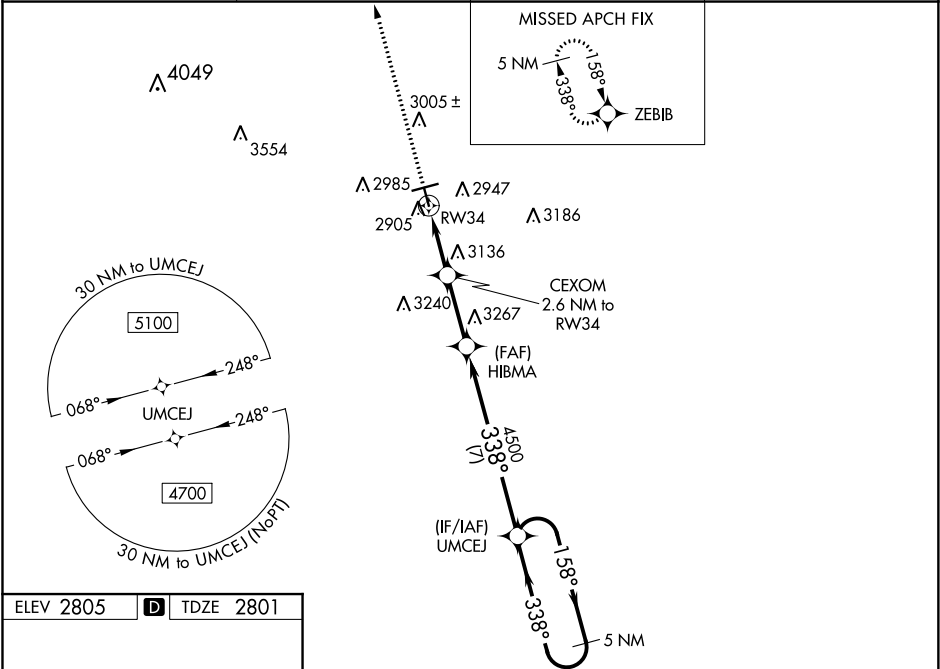
WAAS CH <b>58029</b> <b>W34A</b>	APP CRS <b>338°</b>	Rwy Idg <b>3977</b> TDZE <b>2801</b> Apt Elev <b>2805</b>
----------------------------------------	------------------------	-----------------------------------------------------------------

**RNAV (GPS) RWY 34**  
MIDLAND AIRPARK (MDD)

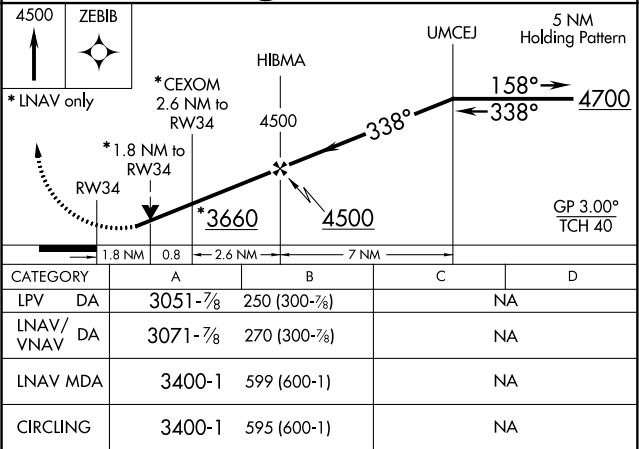
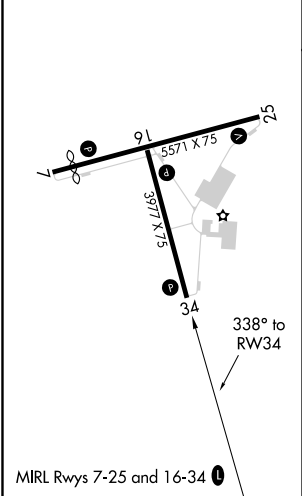
**⚠** Baro-VNAV NA when using Midland Intl Air and Space Port altimeter setting. For uncompensated Baro-VNAV systems, LNAV/VNAV NA below -20°C (-4°F) or above 54°C (130°F). DME/DME RNP-0.3 NA. Helicopter visibility reduction below 3/4 SM NA. VDP NA with Midland Intl Air and Space Port altimeter setting. When local altimeter setting not received, use Midland Intl Air and Space Port altimeter setting and increase all DA 28 feet, all MDA 40, increase LNAV/VNAV all Cals visibility 1/8.

**MISSED APPROACH:**  
Climb to 4500 direct ZEBIB and hold.

AWOS-3 <b>118.125</b>	MIDLAND APP CON ★ <b>124.6 290.4</b>	CLNC DEL <b>121.8</b>	UNICOM <b>122.7 (CTAF) 0</b>
--------------------------	-----------------------------------------	--------------------------	---------------------------------



ELEV 2805	<b>D</b>	TDZE 2801
-----------	----------	-----------



SC-3, 31 DEC 2020 to 28 JAN 2021

SC-3, 31 DEC 2020 to 28 JAN 2021