

WAAS CH 53640 W17A	APP CRS 174°	Rwy Idg TDZE 111 Apt Elev 112
---------------------------------	------------------------	---

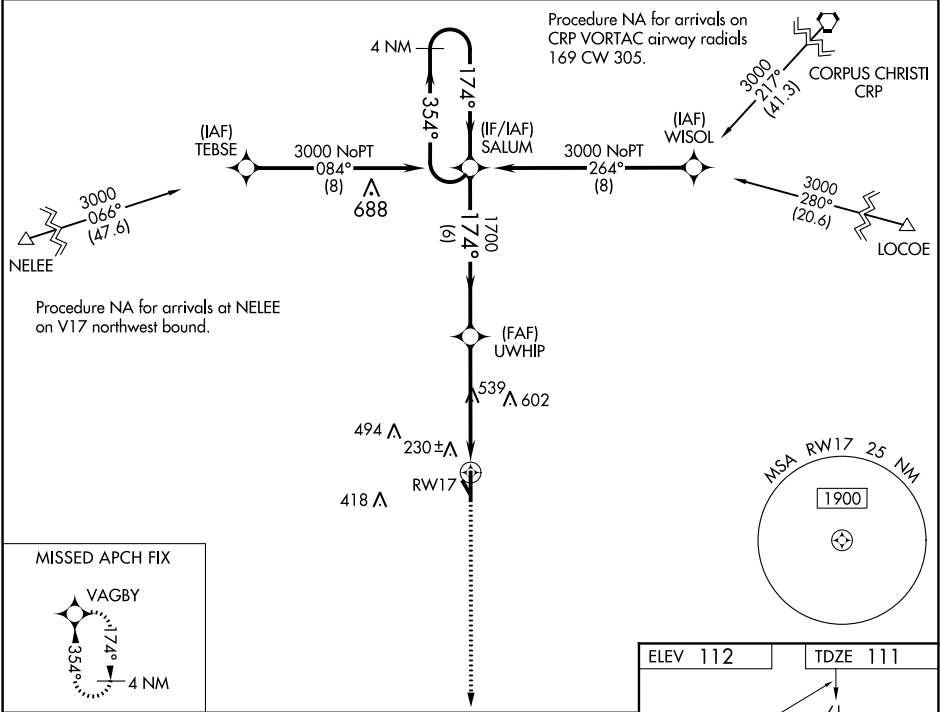
RNAV (GPS) RWY 17
BROOKS COUNTY (BKS)

⚠ For uncompensated Baro-VNAV systems, LNAV/VNAV NA below -15°C (5°F) or above 54°C (130°F).

⚠ Circling Rwy 14 NA at night. Rwy 17 helicopter visibility reduction below ¾ SM NA. DME/DME RNP-0.3 NA. Circling NA for Cat D west of Rwy 17-35.

MISSED APPROACH: Climb to 3000 direct VAGBY and hold.

AWOS-3 118.125	KINGSVILLE APP CON ★ 119.9 290.45	UNICOM 122.8 (CTAF) 0
--------------------------	---	---------------------------------



4 NM Holding Pattern

SALUM

UWHIP

RW17

GP 3.00°
TCH 45

6 NM

2.7 NM

2.1 NM

3000

354°

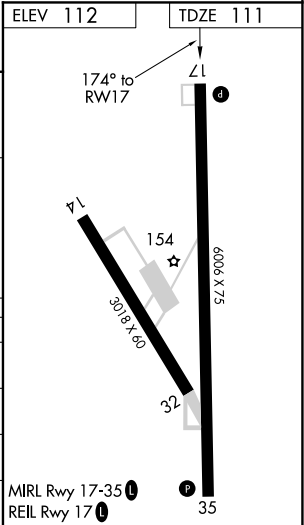
174°

1700

*LNAV only.

VAGBY

CATEGORY	A	B	C	D
LPV DA	361-1 250 (300-1)			
LNAV/VNAV DA	361-1 250 (300-1)			
LNAV MDA	840-1 729 (800-1)		840-2 729 (800-2)	
CIRCLING	840-1 728 (800-1)		940-2½ 828 (900-2½)	940-2¾ 828 (900-2¾)



SC-3, 31 DEC 2020 to 28 JAN 2021

SC-3, 31 DEC 2020 to 28 JAN 2021