

APP CRS
138°

Rwy Idg	3772
TDZE	2372
Apt Elev	2372

RNAV (GPS) RWY 14
EDWARDS COUNTY (ECU)



DME/DME RNP-0.3 NA.



A NA

Procedure NA at night.

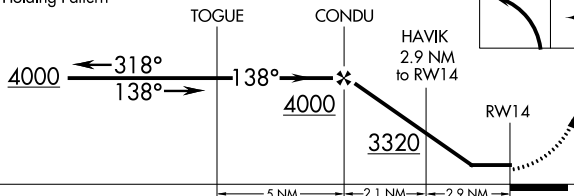
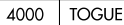
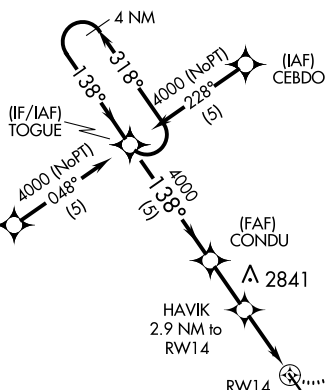
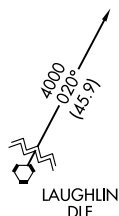
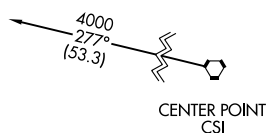
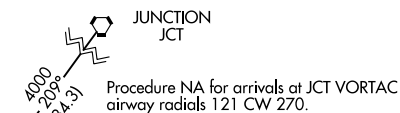
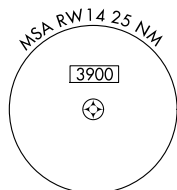
Helicopter visibility reduction below 1 SM NA.


MISSED APPROACH: Climbing left turn to 4000 direct TOGUE and hold.

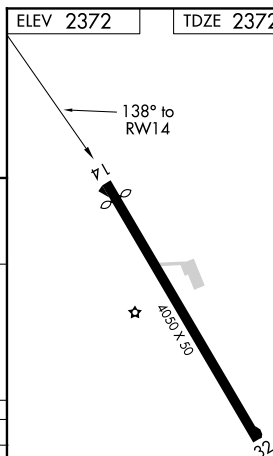
AWOS-3
118.175

DEL RIO APP CON ★
119.6 259.1

CTAF
122.9



CATEGORY	A	B	C	D
LNAV MDA	2960-1	588 (600-1)	2960-1½ 588 (600-1½)	NA
 CIRCLING	3000-1	628 (700-1)	3000-1¾ 628 (700-1¾)	NA



ROCKSPRINGS, TEXAS

Orig-C 08OCT20

29°57'N-100°10'W

EDWARDS COUNTY (ECU)
RNAV (GPS) RWY 14

SC-3, 31 DEC 2020 to 28 JAN 2021