

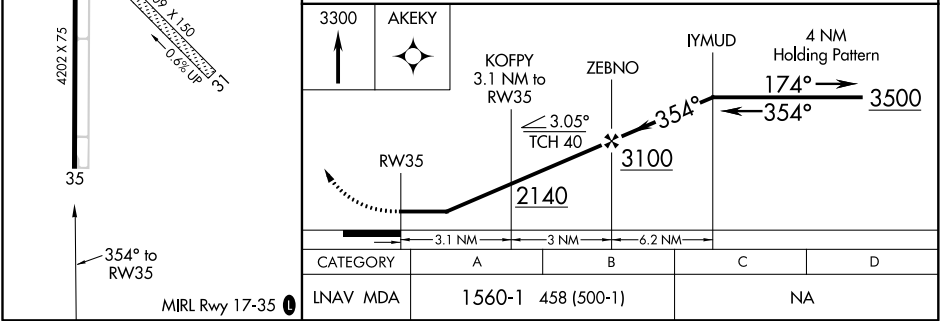
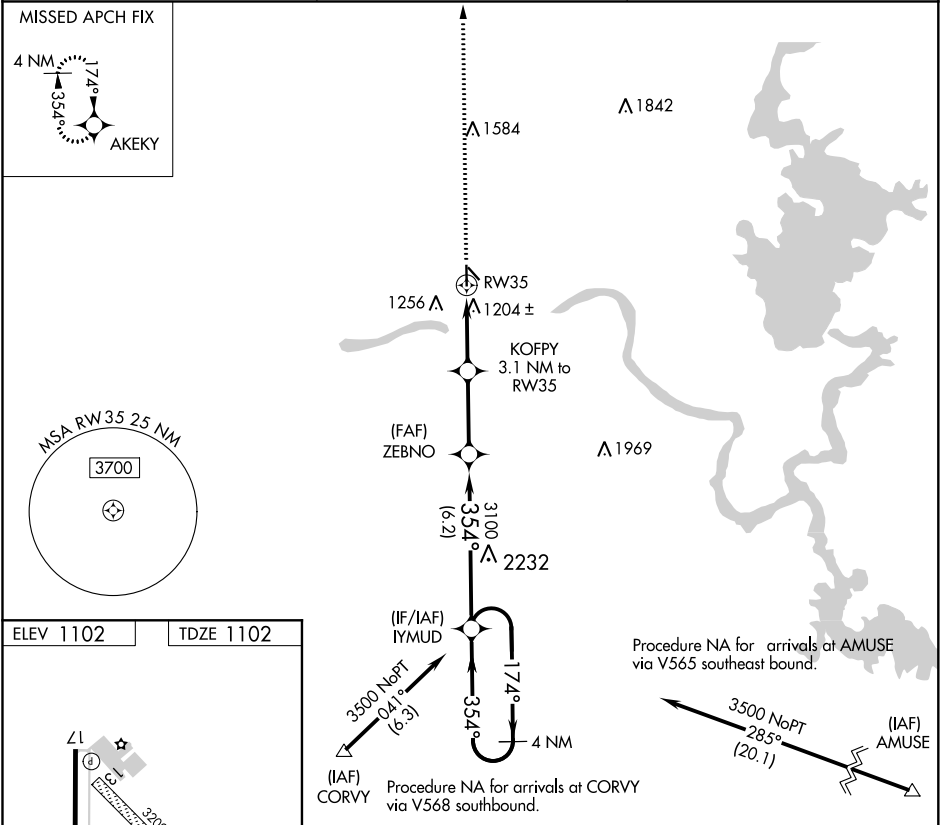
APP CRS	Rwy Idg	4202
354°	TDZE	1102
	Apt Elev	1102

RNAV (GPS) RWY 35

LLANO MUNI (AQO)

RNP APCH.	<div><div>Procedure NA at night. Rwy 35 helicopter visibility reduction below 1 SM NA.</div><div>When local altimeter setting not received, use Burnet altimeter setting and increase all MDA 80 feet.</div></div>	MISSED APPROACH: Climb to 3300 direct AKEY and hold.
-----------	--	--

AWOS-3 119.425	HOUSTON CENTER 132.35 317.5	UNICOM 123.05 (CTAF) 0
-------------------	--------------------------------	---------------------------



SC-3, 31 DEC 2020 to 28 JAN 2021

SC-3, 31 DEC 2020 to 28 JAN 2021