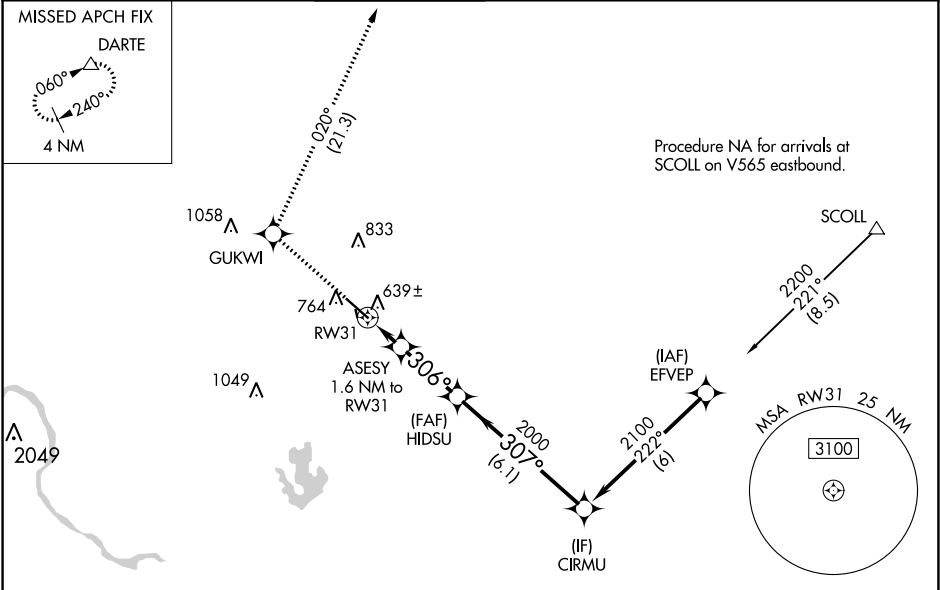


WAAS CH 45916 W31A	APP CRS 306°	Rwy Idg TDZE Apt Elev	6025 612 620
--	------------------------	-----------------------------	---

RNAV (GPS) RWY 31
AUSTIN EXECUTIVE (EDC)

RNP APCH.	<p>Baro-VNAV NA when using Austin-Bergstrom Intl altimeter setting. For uncompensated Baro-VNAV systems, LNAV/VNAV NA below -16°C or above 54°C. When local altimeter setting not received, use Austin-Bergstrom Intl altimeter setting and increase all DA 42 feet; increase all MDA 60 feet. Increase LNAV/VNAV all Cnts visibility 1/8 SM. VDP NA with Austin-Bergstrom Intl altimeter setting. Circling NA to Rwy 16, 34.</p>	MISSED APPROACH: Climb to 3500 direct GUKWI and on track 020° to DARTE and hold.
-----------	---	--

AWOS-3 118.825	APP CON 127.225 317.65	EXECUTIVE TOWER★ 120.3 (CTAF) 0	GND CON 119.45	CINC DEL 126.025 (when tower closed)	UNICOM 122.975
--------------------------	----------------------------------	--	--------------------------	---	--------------------------



ELEV 620		TDZE 612		
3500 ↑	GUKWI ✱	tr 020°	DARTE △	
<p>*LNAV only.</p> <p>ASESY 1.6 NM to RW31</p> <p>*0.8 NM to RW31</p> <p>RW31</p> <p>306°</p> <p>*1140</p> <p>HIDSU 2000</p> <p>307°</p> <p>2100</p> <p>CIRMU</p> <p>GP 3.00° TCH 40</p> <p>0.8 0.8 2.7 NM 6.1 NM</p>				
CATEGORY	A	B	C	D
LPV DA	812- ³ / ₄ 200 (200- ³ / ₄)			
LNAV/VNAV DA	909- ⁷ / ₈ 297 (300- ⁷ / ₈)			
LNAV MDA	900-1 288 (300-1)			
CIRCLING	1140-1 520 (600-1)	1160-1 540 (600-1)	1160-1½ 540 (600-1½)	1220-2 600 (600-2)

The detailed chart shows the final approach segment for RWY 31. It includes the 306° track from ASESY to RW31, the 307° track from RW31 to HIDSU, and the 2100 track from HIDSU to CIRMU. The chart also shows the 3.00° glide path and the 40-foot threshold. The chart includes various navigational aids, including a 2049 MSL obstacle near the start and a 3100 MSL obstacle near the end. The chart also shows the 25 NM MSA for RW31.

MIRL Rwy 13-31
REIL Rwy 13 and 31