

WAAS CH 86618 W13A	APP CRS 134°	Rwy Idg TDZE Apt Elev	6000 130 130
--	------------------------	-----------------------------	---

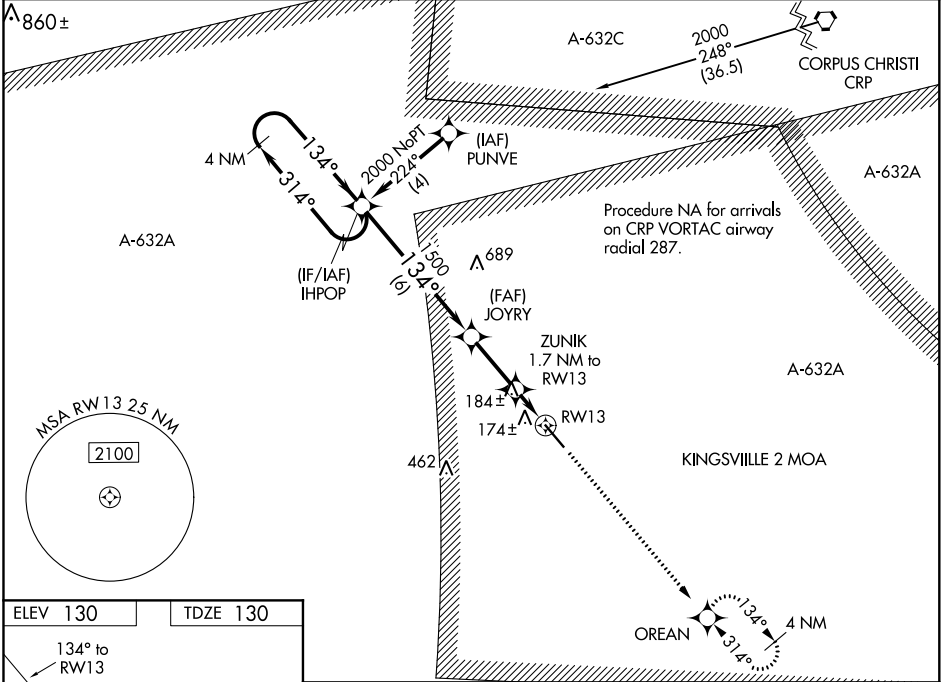
RNAV (GPS) RWY 13
KLEBERG COUNTY (IKG)

NA

For uncompensated Baro-VNAV systems, LNAV/VNAV NA below -15°C (5°F) or above 48°C (118°F). DME/DME RNP-0.3 NA. Visibility reduction by helicopters NA. When local altimeter setting not received, use Alice altimeter setting and increase all DA 33 feet and all MDA 40 feet and LPV all Cats, LNAV/VNAV all Cats, and LNAV Cat D visibility ¼ mile. Baro-VNAV and VDP NA when using Alice altimeter setting.

MISSED APPROACH: Climb to 2000 direct OREAN and hold.

AWOS-3P 119.075	KINGSVILLE APP CON ★ 119.9 290.45	UNICOM 122.7 (CTAF) 0
---------------------------	---	---------------------------------



ELEV **130** TDZE **130**

134° to RWY 13

4000 X 75

REIL Rwy 13 and 31 **0**
MIRL Rwy 13-31 **0**

4 NM Holding Pattern		VGSI and RNAV glidepath not coincident (VGSI Angle 3.00/TCH 39).		2000	OREAN
GP 3.00° TCH 42		JOYRY 1500		*LNAV only	
314°		134°		ZUNIK 1.7 NM to RW13	
1500		*0.9 NM to RW13		RW13	
6 NM		2.4 NM		0.8 0.9	
CATEGORY	A	B	C	D	
LPV DA	380-¾		250 (300-¾)		
LNAV/VNAV DA	444-1		314 (400-1)		
LNAV MDA	440-1		310 (400-1)		
CIRCLING	500-1 370 (400-1)	580-1 450 (500-1)	580-1½ 450 (500-1½)	680-2 550 (600-2)	

SC-3, 31 DEC 2020 to 28 JAN 2021

SC-3, 31 DEC 2020 to 28 JAN 2021