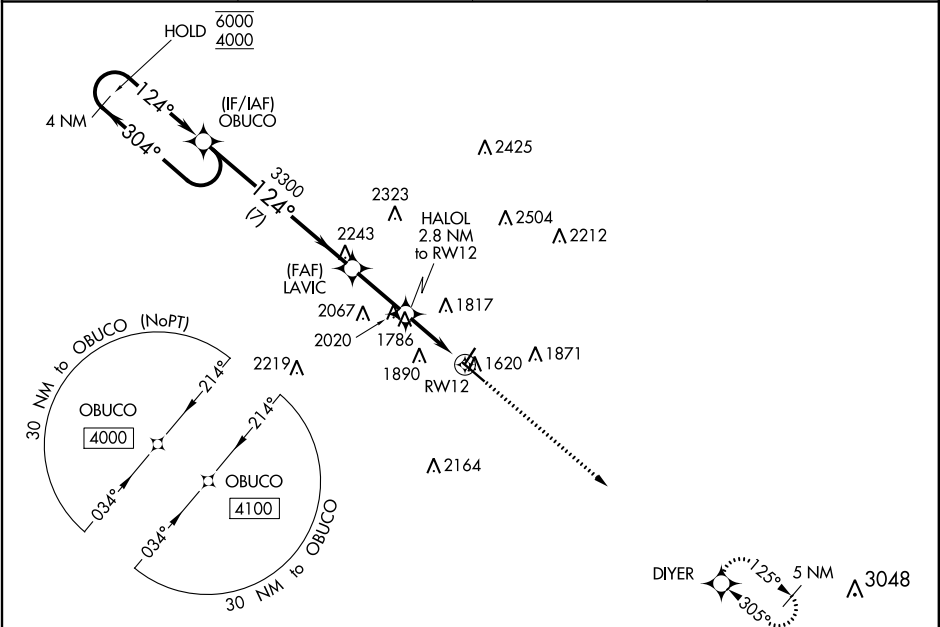


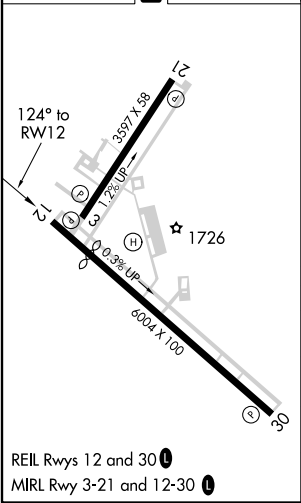
WAAS CH 45628 W12A	APP CRS 124°	Rwy Idg TDZE Apt Elev	5313 1586 1617
--	------------------------	-----------------------------	---

RNAV (GPS) RWY 12
KERRVILLE MUNI/LOUIS SCHREINER FIELD (ERV)

RNP APCH. ⚠ For uncompensated Baro-VNAV systems, LNAV/VNAV NA below -18°C or above 54°C.			MISSED APPROACH: Climb to 4100 direct DIYER and hold.
AWOS-3 118.125	HOUSTON CENTER 134.95 269.4	CLNC DEL 134.95	UNICOM 122.7 (CTAF) 0



ELEV 1617	D	TDZE 1586
-----------	----------	-----------



4 NM Holding Pattern				4100	DIYER
OBUCO				* LNAV only.	
6000 ← 304°				↑	
4000 ← 124°				⬤	
GP 3.00° TCH 40				* 2500	
LAVIC 3300				* 1.3 NM to RW12	
HALOL 2.8 NM to RW12				RW12	
7 NM				1.5 NM	
2.5 NM				1.3 NM	
CATEGORY	A	B	C	D	
LPV DA	1836-1		250 (300-1)		
LNAV/VNAV DA	1936-1½		350 (400-1½)		
LNAV MDA	2040-1	454 (500-1)	2040-1½	454 (500-1½)	
CIRCLING	2320-1 703 (800-1)	2340-1 723 (800-1)	2380-2¼ 763 (800-2¼)	2540-3 923 (1000-3)	

SC-3, 31 DEC 2020 to 28 JAN 2021

SC-3, 31 DEC 2020 to 28 JAN 2021