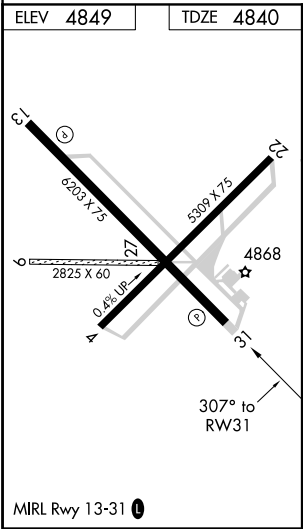
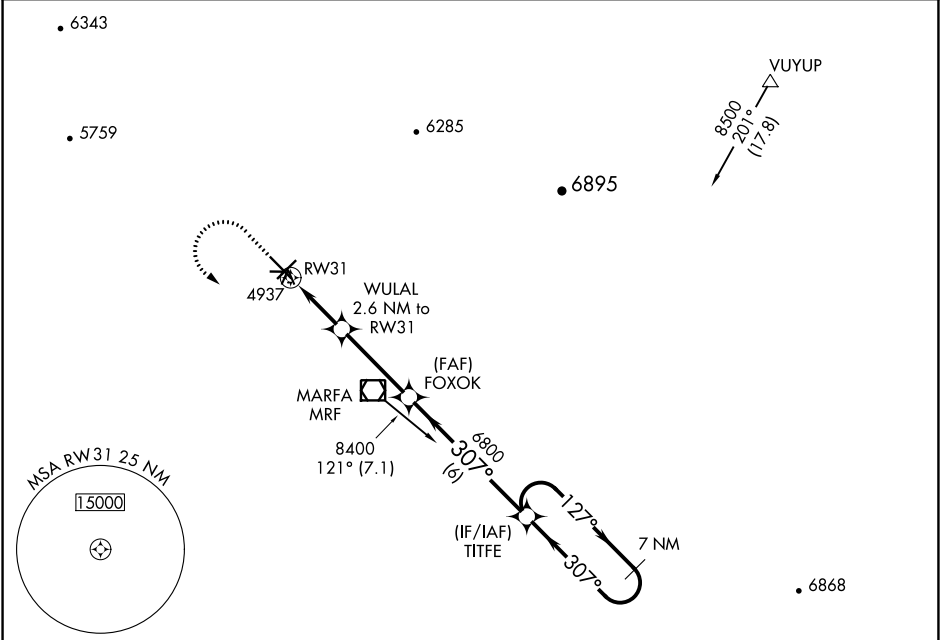


APP CRS	Rwy Idg	6203
307°	TDZE	4840
	Apt Elev	4849

RNAV (GPS) RWY 31
MARFA MUNI (MRF')

When local altimeter setting not received, procedure NA. DME/DME RNP-0.3 NA. Visibility reduction by helicopters NA.	MISSED APPROACH: Climb to 5300 then climbing left turn to 9000 direct TITFE and hold, continue climb-in-hold to 9000.
--	---

AWOS-3PT 134.025	ALBUQUERQUE CENTER 135.875 292.15	UNICOM 122.8 (CTAF) 0
---------------------	--------------------------------------	--------------------------



5300	9000	TITFE	TITFE	7 NM Holding Pattern
↑	↶	✧	✧	
		FOXOK		
		WULAL 2.6 NM to RW31		
		5700	6800	8400
		2.6 NM	3.4 NM	6 NM
CATEGORY	A	B	C	D
LNAV MDA	5200-1 360 (400-1)			
CIRCLING	5280-1 431 (500-1)	5300-1 451 (500-1)	5300-1½ 451 (500-1½)	5400-2 551 (600-2)

SC-3, 31 DEC 2020 to 28 JAN 2021

SC-3, 31 DEC 2020 to 28 JAN 2021