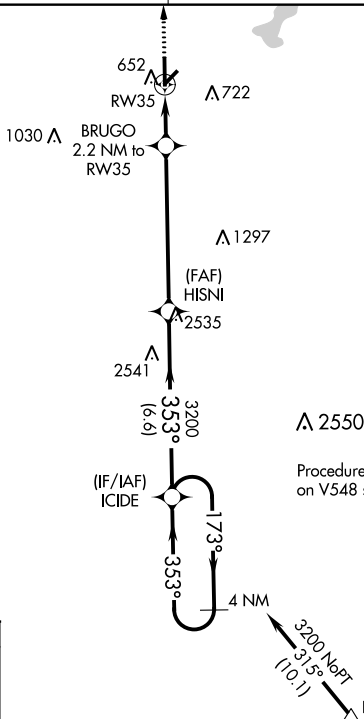


RNAV (GPS) RWY 35
MC GREGOR EXECUTIVE (PWG)

MISSED APPROACH:
Climb to 2500 direct BLDEE
and on track 018° to
ACT VORTAC and hold.



The diagram illustrates the intersection of two runways: MRL Rwy 17-35 and REIL Rwy 17. Runway 17-35 is oriented vertically, while Runway 17 is oriented horizontally. Taxiway A is located at the bottom left, and Taxiway Z1 is at the top left. Taxiway Z2 branches off from Taxiway Z1 towards the right. A star symbol is positioned near the intersection of the two runways. An arrow points from the text "353° to RW35" towards the intersection area.

Figure 1: Example of a 4 NM Holding Pattern. The diagram illustrates a holding pattern for the 4 NM segment. The pattern is a right turn with a 173° heading. The distance from the start of the pattern to the 4 NM point is 2.2 NM. The distance from the 4 NM point to the 3200 point is 5.9 NM. The distance from the 3200 point to the 3200 point is 6.6 NM. The pattern is labeled with '4 NM Holding Pattern' and '3200'. The diagram also shows the 'RW35' and 'BRUGO' points, and the 'ICIDE' point. The diagram includes a scale bar for 2.2 NM, 5.9 NM, and 6.6 NM. The diagram also includes a scale bar for 2.2 NM, 5.9 NM, and 6.6 NM. The diagram also includes a scale bar for 2.2 NM, 5.9 NM, and 6.6 NM.

SC-3, 31 DEC 2020 to 28 JAN 2021