

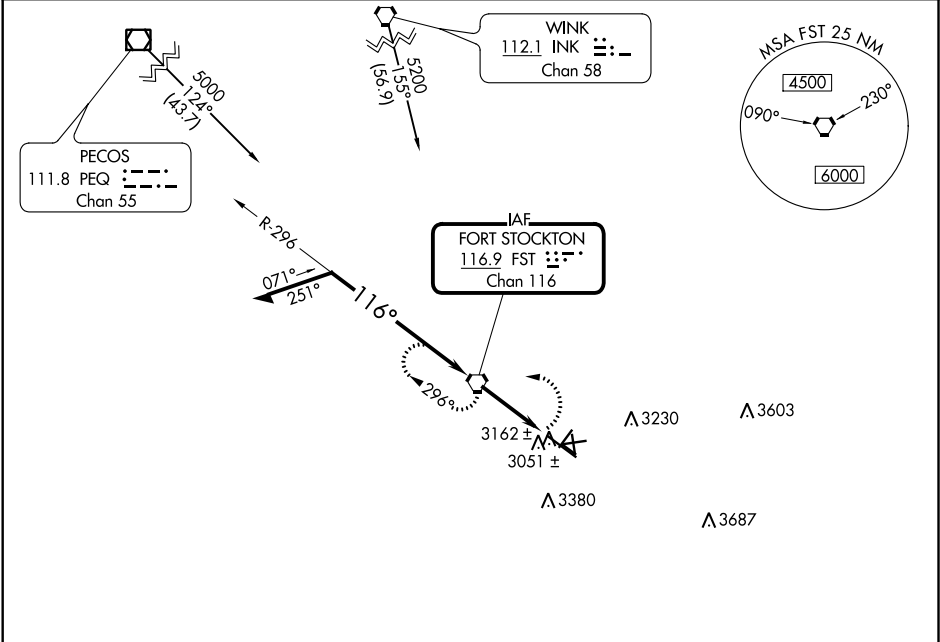
VORTAC FST	APP CRS	Rwy Idg	7508
<b>116.9</b>	<b>116°</b>	TDZE	<b>3002</b>
Chan 116		Apt Elev	<b>3011</b>

VOR RWY 12

FORT STOCKTON-PECOS COUNTY (FST)

<p><b>⚠</b> Circling NA to Rwys 7-25, 11-29 and 16-34. <b>⚠</b> Circling Rwy 3, 21, 30 NA at night.</p>	<p>MISSED APPROACH: Climbing left turn to 5000 direct FST VORTAC and hold.</p>
---	--

ASOS <b>118.525</b>	ALBUQUERQUE CENTER <b>135.875 292.15</b>	UNICOM <b>122.8 (CTAF) 0</b>
------------------------	---	---------------------------------



△ 4064

Remain  
within 10 NM

FST  
VORTAC

5000

FST

4800

296°

116°

4200

3.48°  
TCH 45

FST  
3.2

3.2 NM

VGSI and descent  
angles not coincident  
(VGSI Angle 3.00/TCH 45).

CATEGORY	A	B	C	D
S-12	3500-1	498 (500-1)	3500-1¼ 498 (500-1¼)	3500-1½ 498 (500-1½)
CIRCLING	3540-1	529 (600-1)	3600-1½ 589 (600-1½)	3760-2½ 749 (800-2½)

MIRL Rwy 3-21 and 12-30 0

FAF to MAP 3.2 NM

Knots	60	90	120	150	180
Min:Sec	3:12	2:08	1:36	1:17	1:04