

WAAS  
CH **50239**  
**W01A**

APP CRS  
**012°**

Rwy Idg  
TDZE **844**  
Apt Elev **848**

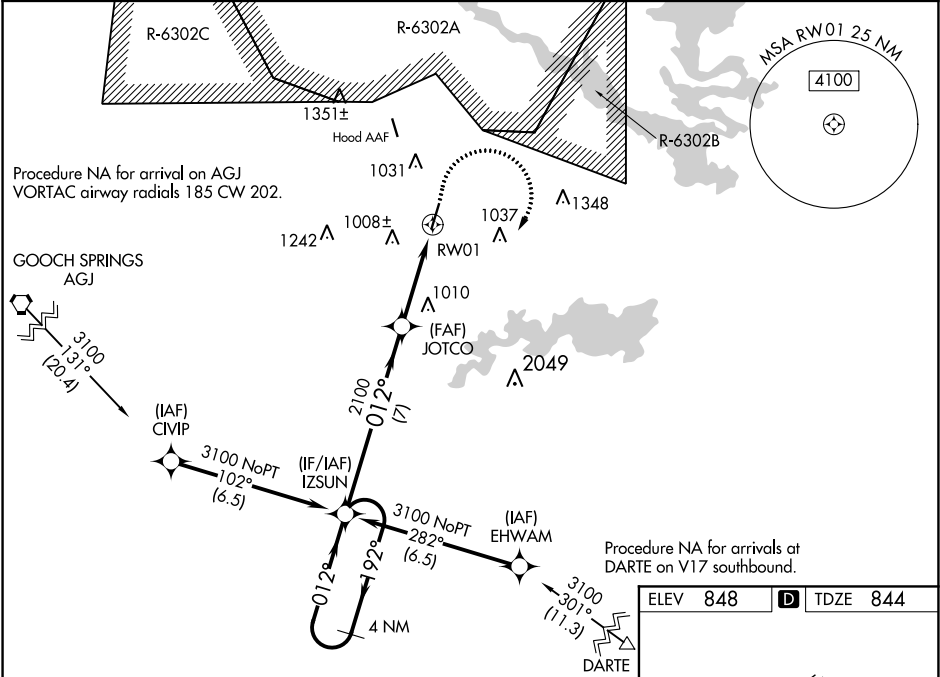
**RNAV (GPS) RWY 1**  
SKYLARK FIELD (ILE)

▼

For uncompensated Baro-VNAV systems, LNAV/VNAV NA below -16°C (4°F) or above 54°C (130°F). DME/DME RNP-0.3 NA. Circling Rwy 19 NA at night.

MISSED APPROACH: Climb to 1300 then Climbing right turn to 3100 direct IZSUN and hold.

AWOS-3PT <b>128.575</b>	GRAY APP CON <b>120.075 323.15</b>	CLNC DEL <b>121.7</b>	UNICOM <b>122.7 (CTAF)</b>
----------------------------	---------------------------------------	--------------------------	-------------------------------



VGSI and RNAV Glidepath not coincident (VGSI Angle 3.00/TCH 72).		ELEV <b>848</b>	TDZE <b>844</b>
4 NM Holding Pattern			
GP 3.00° TCH 45			
CATEGORY	A	B	D
LPV DA	1044-3/4	200 (200-3/4)	NA
LNAV/VNAV DA	1608-3	764 (800-3)	NA
LNAV MDA	1360-1	516 (600-1)	NA
CIRCLING	1360-1	512 (500-1)	NA