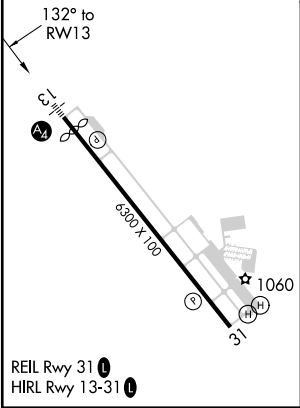
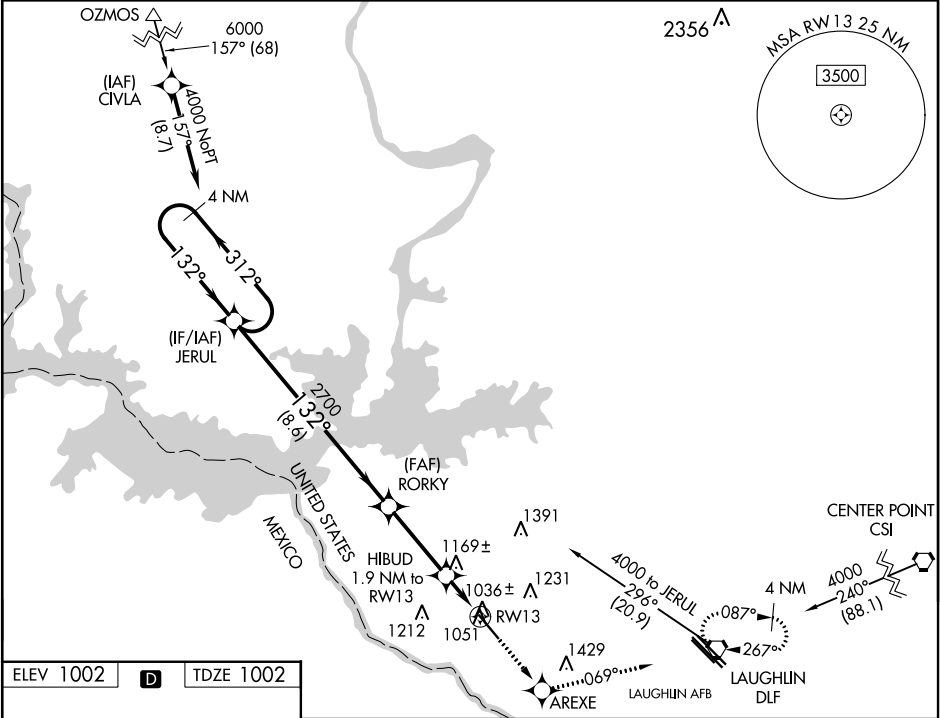


WAAS CH <b>86499</b> <b>W13A</b>	APP CRS <b>132°</b>	Rwy Idg TDZE <b>1002</b> Apt Elev <b>1002</b>
--	------------------------	---

RNAV (GPS) RWY 13  
DEL RIO INTL (DRT)

RNP APCH. ⚠ Circling NA for Cat D southwest of Rwy 13-31. When local altimeter setting not received, use Laughlin AFB altimeter setting and increase all DA 30 feet and all MDA 40 feet, increase LPV visibility all Cats, LNAV visibility Cats C and D and Circling visibility Cat D ¼ mile. Baro-VNAV NA when using Laughlin AFB altimeter setting. For uncompensated Baro-VNAV systems, LNAV/VNAV NA below -17° C (2°F) or above 47°C (116°F).	MALS ⚠ =	MISSED APPROACH: Climb to 4000 direct AREXE and on 069° track to DLF VORTAC and hold, continue climb-in-hold to 4000.
--	-------------	---

ASOS <b>118.525</b>	DEL RIO APP CON * <b>119.6 259.1</b>	CLNC DEL <b>120.5</b>	UNICOM <b>122.8</b> (CTAF) Ⓜ
------------------------	---	--------------------------	---------------------------------



VGSI and RNAV glidepath not coincident (VGSI Angle 3.00/TCH 47).			
4 NM	AREXE	tr 069°	DLF
Holding Pattern	JERUL	RORKY	HIBUD 1.9 NM to RW13
GP 3.00° TCH 48	4000	2700	*LNAV only.
8.6 NM	3.2 NM	1.9	
CATEGORY	A	B	C
LPV DA	1252-3/4	250 (300-3/4)	
LNAV/VNAV DA	1401-1	399 (400-1)	
LNAV MDA	1500-1/2 498 (500-1/2)	1500-3/4 498 (500-3/4)	1500-1 498 (500-1)
CIRCLING	1500-1 498 (500-1)	1560-1 558 (600-1 1/2)	1640-2 638 (700-2)

SC-3, 31 DEC 2020 to 28 JAN 2021

SC-3, 31 DEC 2020 to 28 JAN 2021