

WAAS CH 60914 W31A	APP CRS 312°	Rwy Idg 7510 TDZE 43 Apt Elev 46
--	------------------------	---

RNAV (GPS) Y RWY 31

CORPUS CHRISTI INTL (CRP)

▼

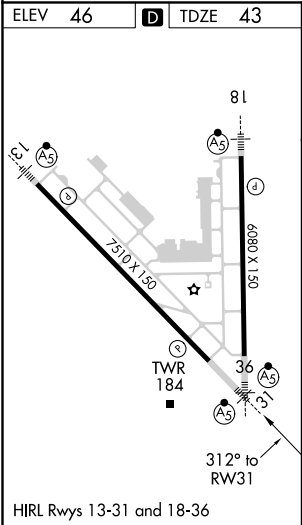
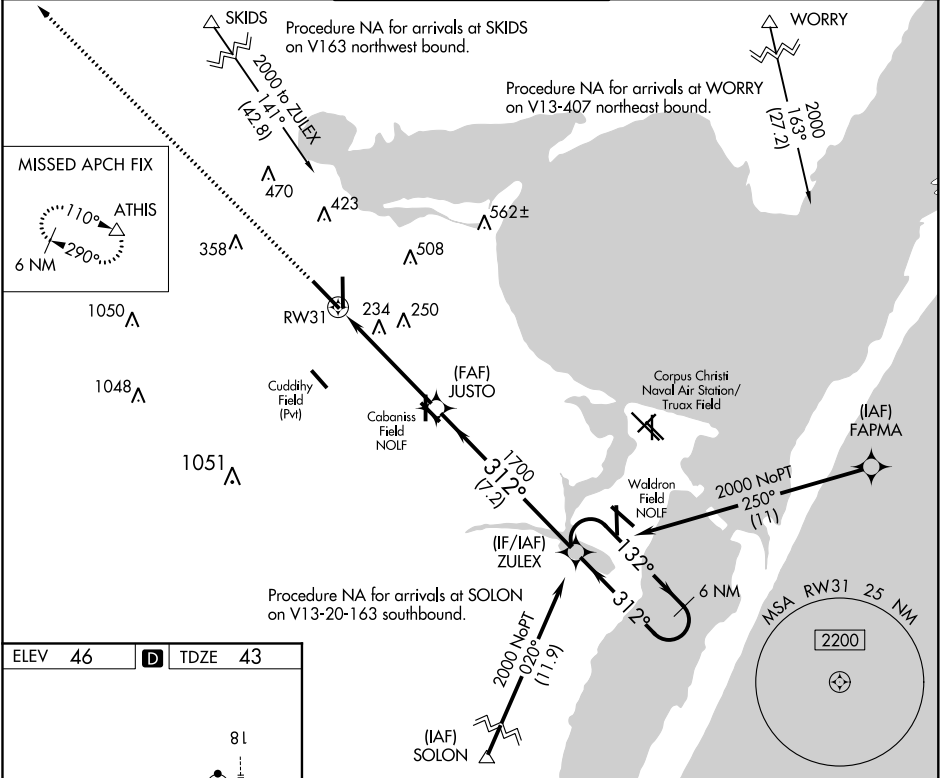
▲

Procedure NA when Cabaniss Field traffic patterns active. DME/DME RNP-0.3 NA. For uncompensated Baro-VNAV systems, LNAV/VNAV NA below -1°C (31°F) or above 54°C (130°F). For inop MALSR, increase LPV Cat E visibility to ¾ mile, LNAV/VNAV all Cats visibility to 1 mile, and LNAV Cat E visibility to 1 ¾ mile.

MALSR

MISSED APPROACH: Climb to 2000 direct ATHIS and hold.

ATIS 126.8	CORPUS APP CON 120.9 348.725	CORPUS TOWER 119.4 257.8	GND CON 121.9 269.15	CLNC DEL 118.55
----------------------	--	------------------------------------	--------------------------------	---------------------------



2000 ↑	ATHIS △					
-----------	------------	--	--	--	--	--

SC-3, 31 DEC 2020 to 28 JAN 2021

SC-3, 31 DEC 2020 to 28 JAN 2021