


APP CRS	Rwy ldg	7510
312°	TDZE	43
	Apt Elev	46

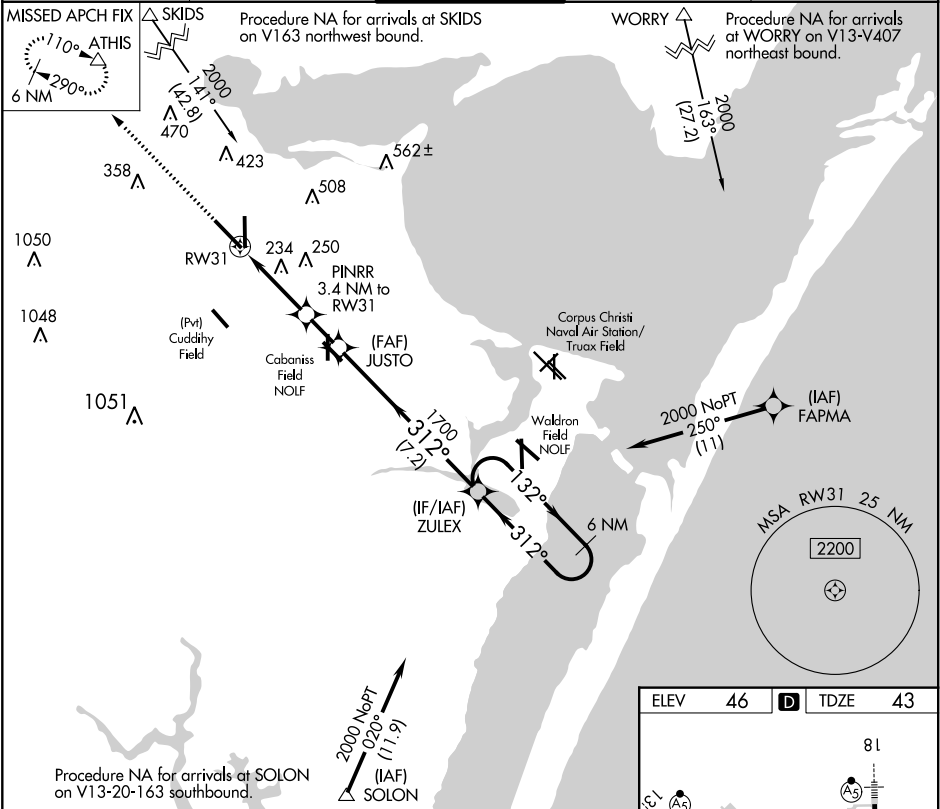
RNAV (GPS) X RWY 31
CORPUS CHRISTI INTL (CRP)

DME/DME RNP-0.3 NA.
▲ For inop MALSR, increase LNAV Cat E visibility to 1½ mile.

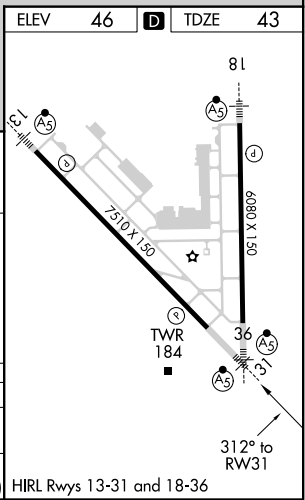
MALSR


MISSED APPROACH: Climb to 2000 direct ATHIS and hold.

ATIS 126.8	CORPUS APP CON 120.9 348.725	CORPUS TOWER 119.4 257.8	GND CON 121.9 269.15	CLNC DEL 118.55
----------------------	--	------------------------------------	--------------------------------	---------------------------



6 NM Holding Pattern		ZULEX		VGSIs and descent angles not coincident (VGSi Angle 3.00/TCH 50).		2000 ATHIS	
2000		132°		312°		1700	
						1300	
						1.7 NM	
						2.1 NM	
						1.3 NM	
CATEGORY	A	B	C	D	E		
LNAV MDA	500-½	457 (500-½)	500-¾	457 (500-¾)			
CIRCLING	500-1 454 (500-1)	580-1 534 (600-1)	820-2¼ 774 (800-2¼)	820-2½ 774 (800-2½)	820-2¾ 774 (800-2¾)		



SC-3, 31 DEC 2020 to 28 JAN 2021

SC-3, 31 DEC 2020 to 28 JAN 2021