


APP CRS	Rwy Idg	7510
132°	TDZE	46
	Apt Elev	46

RNAV (RNP) Z RWY 13
CORPUS CHRISTI INTL (CRP)

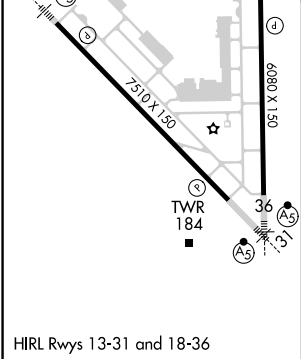
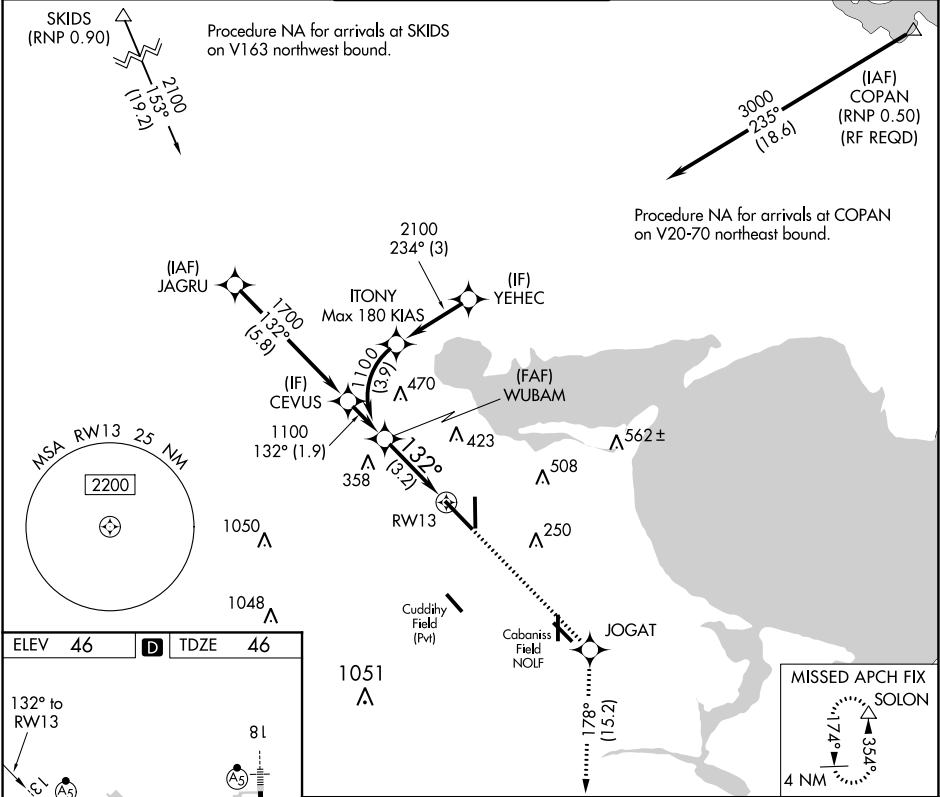
▼ For uncompensated Baro-VNAV systems, procedure NA below -1°C (31°F) or above 54°C (130°F). GPS required.

MALSR



MISSED APPROACH: Climb to 2000 on track 132° to JOGAT and on track 178° to SOLON and hold.

ATIS 126.8	CORPUS APP CON 120.9 348.725	CORPUS TOWER 119.4 257.8	GND CON 121.9 269.15	CLNC DEL 118.55
----------------------	--	------------------------------------	--------------------------------	---------------------------



2000 JOGAT SOLON

tr 132° tr 178°

See planview for multiple IF locations.

WUBAM 1100

1100

132°

3.2 NM

GP 3.00° TCH 50

CATEGORY	A	B	C	D
RNP 0.30 DA	394/30	348 (400-%)		

AUTHORIZATION REQUIRED