

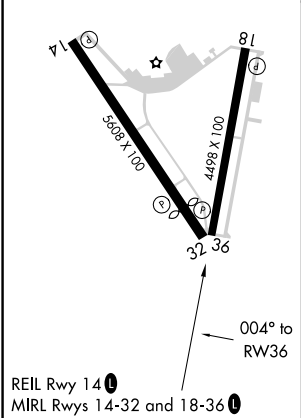
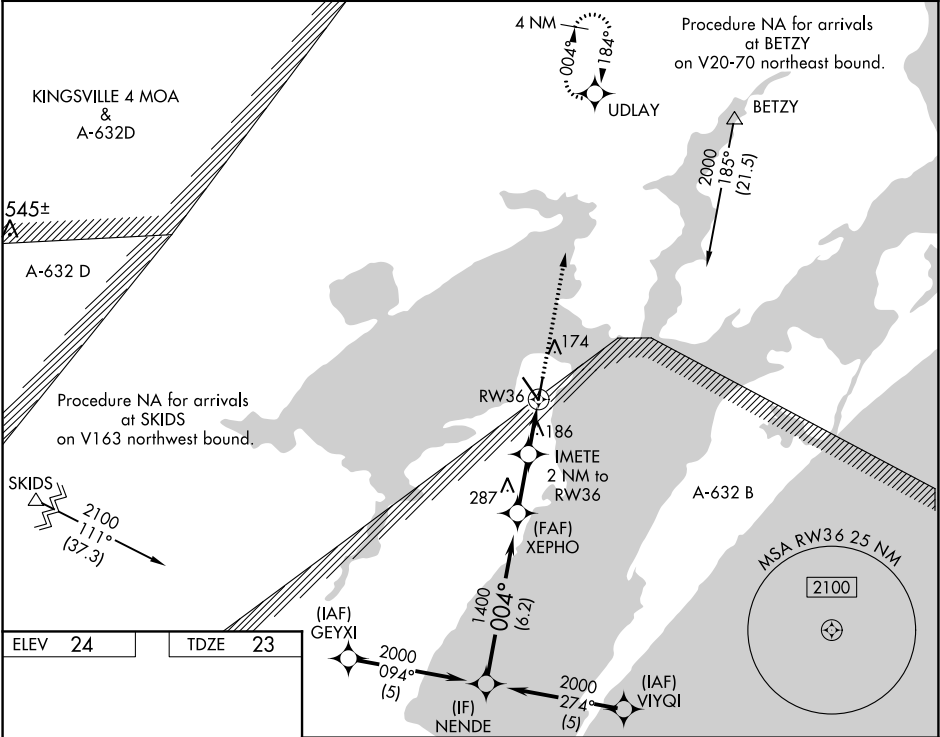
WAAS CH <b>61317</b> <b>W36A</b>	APP CRS <b>004°</b>	Rwy ldg TDZE <b>23</b> Apt Elev <b>24</b>	<b>4498</b>
--	------------------------	---	-------------

**RNAV (GPS) RWY 36**  
ARANSAS COUNTY (RKP)

**Baro-VNAV NA** when using Ingleside altimeter setting. For uncompensated Baro-VNAV systems, LNAV/VNAV NA below -1.5°C (5°F) or above 54°C (130°F). DME/DME RNP-0.3 NA. Visibility reduction by helicopters NA. When local altimeter setting not received, use Ingleside altimeter setting and increase all DA 33 feet and all MDA 40 feet. VDP NA with Ingleside altimeter setting.

**MISSED APPROACH:**  
Climb to 2000 direct UDLAY and hold.

ASOS <b>119.275</b>	CORPUS APP CON <b>120.9 348.725</b>	CLNC DEL <b>121.7</b>	UNICOM <b>123.05 (CTAF) 0</b>
------------------------	--	--------------------------	----------------------------------



NENDE				XEPHO			
2000				1400			
Procedure Turn NA				IMETE 2 NM to RW36			
GP 3.00° TCH 42				* 1.2 NM to RW36			
6.2 NM				2.1 NM			
0.8 NM				1.2 NM			
RW36				RW36			
CATEGORY	A		B	C		D	
LPV DA	273-1		250 (300-1)			NA	
LNAV/VNAV DA	498-1¾		475 (500-1¾)			NA	
LNAV MDA	440-1		417 (500-1)	440-1¼ 417 (500-1¼)		NA	
CIRCLING	500-1		476 (500-1)	500-1½ 476 (500-1½)		NA	

SC-3, 31 DEC 2020 to 28 JAN 2021

SC-3, 31 DEC 2020 to 28 JAN 2021