

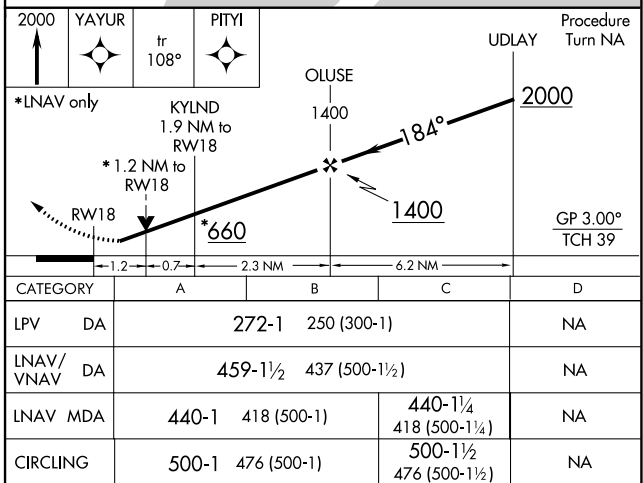
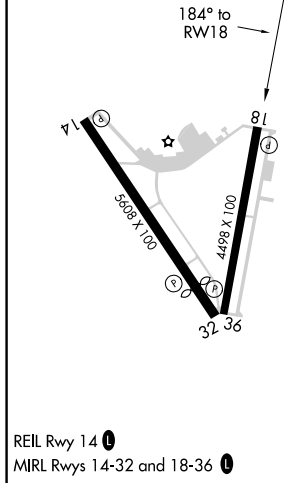
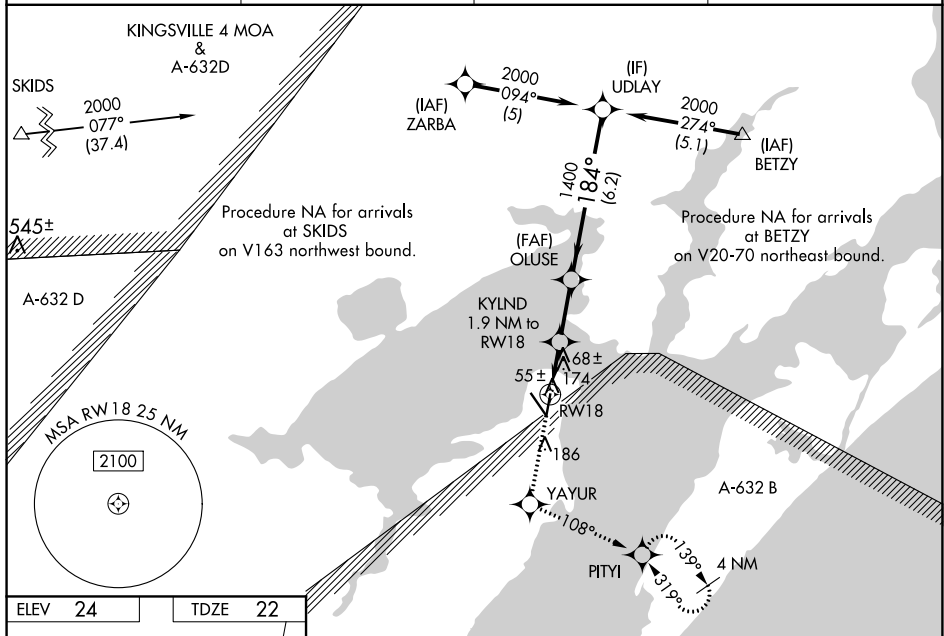
WAAS CH <b>50517</b> <b>W18A</b>	APP CRS <b>184°</b>	Rwy Idg TDZE Apt Elev	<b>4498</b> <b>22</b> <b>24</b>
--	------------------------	-----------------------------	---------------------------------------

## ARANSAS COUNTY (RKP)

**V** Baro-VNAV NA when using Ingleside altimeter setting. For uncompensated Baro-VNAV systems, LNAV/VNAV NA below -15°C (5°F) or above 54°C (130°F). DME/DME RNP-0.3 NA. Helicopter visibility reduction below ¾ SM NA. When local altimeter setting not received, use Ingleside altimeter setting and increase all DA 33 feet and all MDA 40 feet; increase LNAV/VNAV visibility all Cats ¼ mile. VDP NA with Ingleside altimeter setting.

**MISSED APPROACH:** Climb to 2000 direct YAYUR and on track 108° to PITYI and hold, continue climb-in-hold to 2000.

ASOS <b>119.275</b>	CORPUS APP CON <b>120.9 348.725</b>	CLINC DEL <b>121.7</b>	UNICOM <b>123.05</b> (CTAF) <b>0</b>
------------------------	--	---------------------------	---



SC-3, 31 DEC 2020 to 28 JAN 2021