

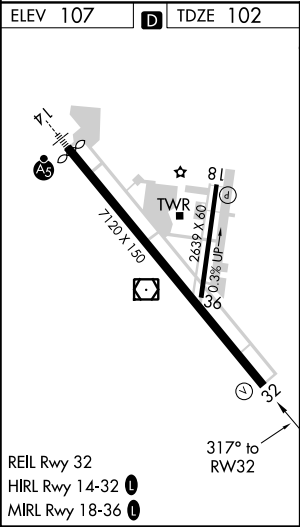
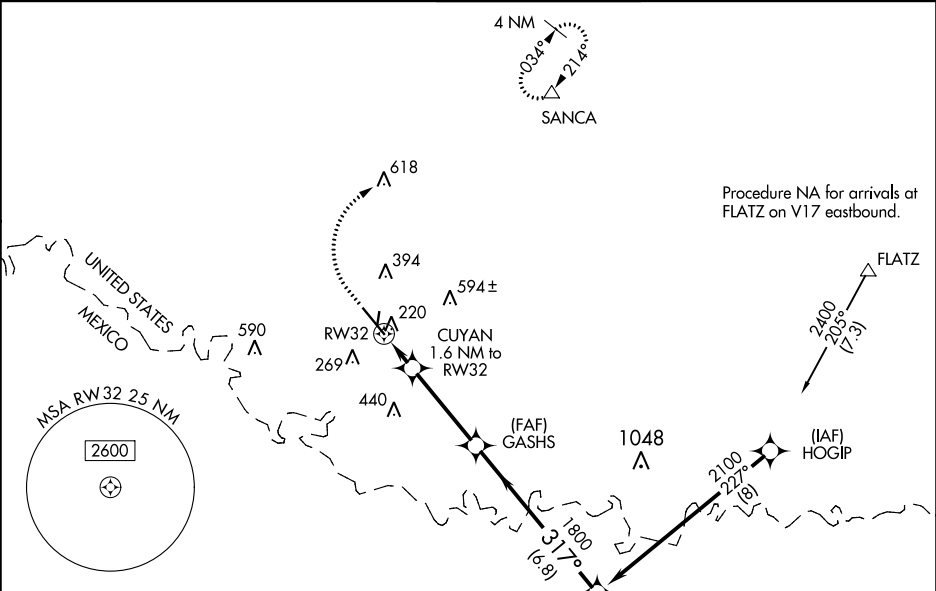
WAA CH 78001 W32A	APP CRS 317°	Rwy Idg TDZE Apt Elev	7120 102 107
---------------------------------------	------------------------	-----------------------------	---

RNAV (GPS) RWY 32
MC ALLEN MILLER INTL (MF'E)

⚠ For uncompensated Baro-VNAV systems, LNAV/VNAV NA below 1°C (34°F) or above 54°C (130°F). Circling NA northeast of Rwy 14-32. DME/DME RNP-0.3 NA. When local altimeter setting not received, use Weslaco altimeter setting: increase all DA 39 feet and LNAV/VNAV all Cat visibility ¼ mile; increase all MDA 40 feet and LNAV Cat C/D visibility ½ mile. Baro-VNAV and VDP NA when using Weslaco altimeter setting.

MISSED APPROACH: Climb to 800 then climbing right turn to 2000 direct SANCA and hold.

ATIS 128.5	VALLEY APP CON 121.0 377.2	MC ALLEN TOWER * 118.5 (CTAF) 0 256.9	GND CON 121.8	UNICOM 122.95
----------------------	--------------------------------------	---	-------------------------	-------------------------



800

2000

SANCA

VGSI and RNAV glidepath not coincident (VGSI Angle 3.00/TCH 53).

*LNAV only

RW32

1 NM

0.6

3.6 NM

6.8 NM

CUYAN

1.6 NM to RW32

GASHS

1800

FOVUD

2100

317°

GP 3.00°

TCH 50

CATEGORY	A		B	C	D
LPV DA			302-¾	200 (200-¾)	
LNAV/VNAV DA			391-⅞	289 (300-⅞)	
LNAV MDA			480-1	378 (400-1)	
C CIRCLING	580-1	473 (500-1)	580-1½ 473 (500-1½)	800-2¼ 693 (700-2¼)	

SC-3, 31 DEC 2020 to 28 JAN 2021

SC-3, 31 DEC 2020 to 28 JAN 2021