

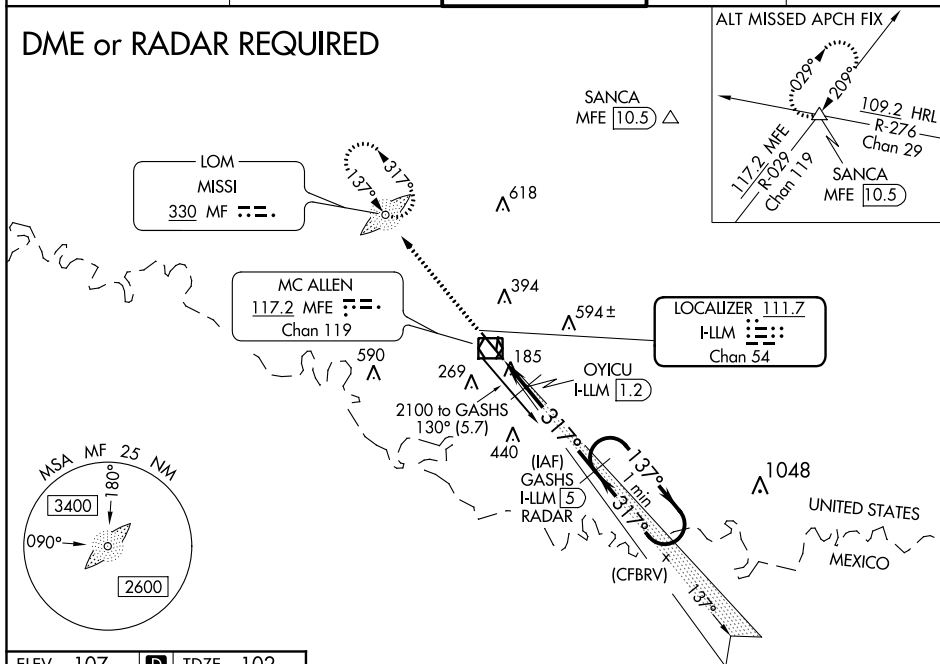
ILS or LOC RWY 32
MC ALLEN MILLER INTL (MFE)

Circling NA northeast of Rwy 14-32. ADF and DME or Radar required. When local altimeter setting not received, use Weslaco altimeter setting: increase all DA 39 feet and MDA 40 feet.

MISSED APPROACH: Climb to 2100 direct MF LOM and hold

UNICOM
122.95

DME or RADAR REQUIRED



REIL Rwy 32
HIRL Rwy 14-32 1.0
MIRL Rwy 18-36 1.0

317° 5.2 NM
from FAF

FAF to MAP 5.2 NM	
Knots	60 90 120 150 180
Min:Sec	5:12 3:28 2:36 2:05 1:44

SC-3, 31 DEC 2020 to 28 JAN 2021